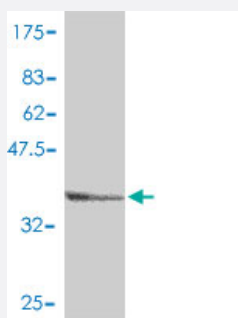


AP1S1 polyclonal antibody (A01)

Catalog # H00001174-A01

Size 50 uL

Applications



Western Blot detection against Immunogen (40.74 KDa) .

Specification

Product Description	Mouse polyclonal antibody raised against a full-length recombinant AP1S1.
Immunogen	AP1S1 (AAH03561, 1 a.a. ~ 133 a.a) full-length recombinant protein with GST tag.
Sequence	MMRFMLLSRQGKLRRLRKWYLATSDKERKKM/RELMQVVLARKPKMCSFLEWRDLKVVYKRYA SLYFCCAIEGQDNELITLELIHRYVELLDKYFGSVCELDIIFNFEKAYFILDEFMGGDVQDTSTFPFS H
Host	Mouse
Reactivity	Human
Quality Control Testing	Antibody Reactive Against Recombinant Protein. Western Blot detection against Immunogen (40.74 KDa) .
Storage Buffer	50 % glycerol
Storage Instruction	Store at -20°C or lower. Aliquot to avoid repeated freezing and thawing.

Applications

- Western Blot (Recombinant protein)

[Protocol Download](#)

- ELISA

Gene Info — AP1S1

Entrez GeneID	1174
GeneBank Accession#	BC003561
Protein Accession#	AAH03561
Gene Name	AP1S1
Gene Alias	AP19, CLAPS1, FLJ92436, SIGMA1A, WUGSC:H_DJ0747G18.2
Gene Description	adaptor-related protein complex 1, sigma 1 subunit
Omim ID	603531
Gene Ontology	Hyperlink
Gene Summary	The protein encoded by this gene is part of the clathrin coat assembly complex which links clathrin to receptors in coated vesicles. These vesicles are involved in endocytosis and Golgi processing. This protein, as well as beta-prime-adaptin, gamma-adaptin, and the medium (mu) chain AP47, form the AP-1 assembly protein complex located at the Golgi vesicle. [provided by RefSeq]
Other Designations	AP-1 complex subunit sigma-1A HA1 19 kDa subunit clathrin assembly protein complex 1 sigma-1A small chain clathrin coat assembly protein AP19 clathrin-associated/assembly/adaptor protein , small 1 (19kD) golgi adaptor HA1/AP1 adaptin sigma-1A subunit sigma

Pathway

- [Lysosome](#)