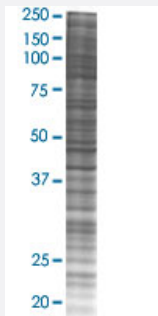


CKS2 293T Cell Transient Overexpression Lysate(Denatured)

Catalog # H00001164-T03

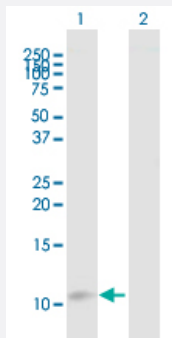
Size 100 uL

Applications



SDS-PAGE Gel

CKS2 transfected lysate.



Western Blot

Lane 1: CKS2 transfected lysate (8.80 KDa)

Lane 2: Non-transfected lysate.

Specification

Transfected Cell Line	293T
Plasmid	pCMV-CKS2 full-length
Host	Human
Theoretical MW (kDa)	8.8
Interspecies Antigen Sequence	Mouse (99); Rat (99)

Quality Control Testing

Transient overexpression cell lysate was tested with Anti-MAD2L1 antibody ([H00001164-B01](#)) by Western Blots.
SDS-PAGE Gel
CKS2 transfected lysate.
Western Blot
Lane 1: CKS2 transfected lysate (8.80 KDa)
Lane 2: Non-transfected lysate.

Storage Buffer

1X Sample Buffer (50 mM Tris-HCl, 2% SDS, 10% glycerol, 300 mM 2-mercaptoethanol, 0.01% Bromophenol blue)

Storage Instruction

Store at -80°C. Aliquot to avoid repeated freezing and thawing.

Applications

- Western Blot

Gene Info — CKS2

Entrez GeneID[1164](#)**GeneBank Accession#**[BC006458.1](#)**Protein Accession#**[AAH06458.1](#)**Gene Name**

CKS2

Gene Alias

CKSHS2

Gene Description

CDC28 protein kinase regulatory subunit 2

Omim ID[116901](#)**Gene Ontology**[Hyperlink](#)**Gene Summary**

CKS2 protein binds to the catalytic subunit of the cyclin dependent kinases and is essential for their biological function. The CKS2 mRNA is found to be expressed in different patterns through the cell cycle in HeLa cells, which reflects specialized role for the encoded protein. [provided by RefSeq]

Other Designations

CDC28 protein kinase 2|CKS1(S. cerevisiae Cdc28/Cdc2 kinase subunit) homolog-2|OTTHUMP00000021616