

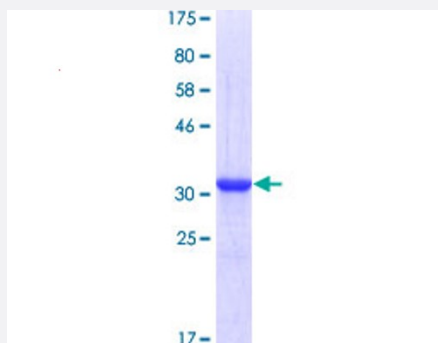
## Full-Length

# CKS2 (Human) Recombinant Protein (P01)

Catalog # H00001164-P01

Size 25 ug, 10 ug

## Applications



## Specification

Product Description	Human CKS2 full-length ORF ( AAH06458, 1 a.a. - 79 a.a.) recombinant protein with GST-tag at N-terminal.
Sequence	MAHKQIYSDKYFDEHYEYRHVMLPRELSKQVPKTHLMSEEEWRRLGVQQSLGWVHYMIHEPEP HILLFRRPLPKDQQK
Host	Wheat Germ (in vitro)
Theoretical MW (kDa)	34.43
Interspecies Antigen Sequence	Mouse (99); Rat (99)
Preparation Method	<a href="#">in vitro wheat germ expression system</a>
Purification	Glutathione Sepharose 4 Fast Flow
Quality Control Testing	12.5% SDS-PAGE Stained with Coomassie Blue.
Storage Buffer	50 mM Tris-HCl, 10 mM reduced Glutathione, pH=8.0 in the elution buffer.
Storage Instruction	Store at -80°C. Aliquot to avoid repeated freezing and thawing.
Note	Best use within three months from the date of receipt of this protein.

## Applications

- Enzyme-linked Immunoabsorbent Assay
- Western Blot (Recombinant protein)
- Antibody Production
- Protein Array

## Gene Info — CKS2

Entrez GeneID	<a href="#">1164</a>
GeneBank Accession#	<a href="#">BC006458</a>
Protein Accession#	<a href="#">AAH06458</a>
Gene Name	CKS2
Gene Alias	CKSHS2
Gene Description	CDC28 protein kinase regulatory subunit 2
Omim ID	<a href="#">116901</a>
Gene Ontology	<a href="#">Hyperlink</a>
Gene Summary	CKS2 protein binds to the catalytic subunit of the cyclin dependent kinases and is essential for their biological function. The CKS2 mRNA is found to be expressed in different patterns through the cell cycle in HeLa cells, which reflects specialized role for the encoded protein. [provided by RefSeq]
Other Designations	CDC28 protein kinase 2 CKS1(S. cerevisiae Cdc28/Cdc2 kinase subunit) homolog-2 OTTHUMP00000021616