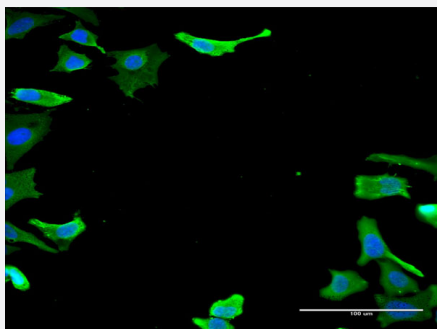


CKS2 monoclonal antibody (M03), clone 1G8

Catalog # H00001164-M03

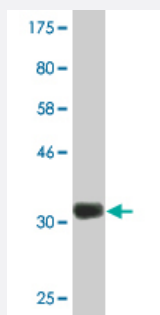
Size 100 ug

Applications



Immunofluorescence

Immunofluorescence of monoclonal antibody to CKS2 on HeLa cell . [antibody concentration 40 ug/ml]



Western Blot detection against Immunogen (34.43 KDa) .

Specification

Product Description

Mouse monoclonal antibody raised against a partial recombinant CKS2.

Immunogen

CKS2 (NP_001818, 1 a.a. ~ 79 a.a) partial recombinant protein with GST tag. MW of the GST tag alone is 26 KDa.

Sequence

MAHKQIYSDKYFDEHYEYRHVMLPRELSKQVPKTHLMSEEEWRRLGVQQSLGWVHYMIHEPEP
HILLFRRPLPKDQQK

Host

Mouse

Reactivity

Human

Interspecies Antigen Sequence	Mouse (99); Rat (99)
Isotype	IgG2b Kappa
Quality Control Testing	Antibody Reactive Against Recombinant Protein. Western Blot detection against Immunogen (34.43 KDa) .
Storage Buffer	In 1x PBS, pH 7.4
Storage Instruction	Store at -20°C or lower. Aliquot to avoid repeated freezing and thawing.

Applications

- Western Blot (Recombinant protein)

[Protocol Download](#)

- ELISA
- Immunofluorescence

Immunofluorescence of monoclonal antibody to CKS2 on HeLa cell . [antibody concentration 40 ug/ml]

Gene Info — CKS2

Entrez GeneID	1164
GeneBank Accession#	NM_001827
Protein Accession#	NP_001818
Gene Name	CKS2
Gene Alias	CKSHS2
Gene Description	CDC28 protein kinase regulatory subunit 2
Omim ID	116901
Gene Ontology	Hyperlink
Gene Summary	CKS2 protein binds to the catalytic subunit of the cyclin dependent kinases and is essential for their biological function. The CKS2 mRNA is found to be expressed in different patterns through the cell cycle in HeLa cells, which reflects specialized role for the encoded protein. [provided by RefSeq]

Other Designations

CDC28 protein kinase 2|CKS1(S. cerevisiae Cdc28/Cdc2 kinase subunit) homolog-2|OTTHUMP00000021616
