

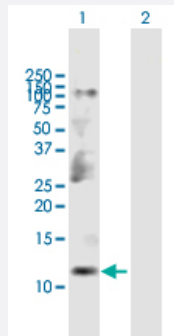
MaxPab®

CKS2 purified MaxPab mouse polyclonal antibody (B01P)

Catalog # H00001164-B01P

Size 50 ug

Applications



Western Blot (Transfected lysate)

Western Blot analysis of CKS2 expression in transfected 293T cell line ([H00004085-T02](#)) by CKS2 MaxPab polyclonal antibody.

Lane 1: CKS2 transfected lysate(8.80 KDa).

Lane 2: Non-transfected lysate.

Specification

Product Description	Mouse polyclonal antibody raised against a full-length human CKS2 protein.
Immunogen	CKS2 (AAH06458.1, 1 a.a. ~ 79 a.a) full-length human protein.
Sequence	MAHKQIYSDKYFDEHYEYRHVMLPRELSKQVPKTHLMSEEEWRRLGVQQSLGWVHYMIHEPEP HILLFRRPLPKDQQK
Host	Mouse
Reactivity	Human
Interspecies Antigen Sequence	Mouse (99); Rat (99)
Quality Control Testing	Antibody reactive against mammalian transfected lysate.
Storage Buffer	In 1x PBS, pH 7.4
Storage Instruction	Store at -20°C or lower. Aliquot to avoid repeated freezing and thawing.

Applications

- Western Blot (Transfected lysate)

Western Blot analysis of CKS2 expression in transfected 293T cell line ([H00004085-T02](#)) by CKS2 MaxPab polyclonal antibody.

Lane 1: CKS2 transfected lysate(8.80 KDa).

Lane 2: Non-transfected lysate.

[Protocol Download](#)

Gene Info — CKS2

Entrez GeneID	1164
GeneBank Accession#	BC006458.1
Protein Accession#	AAH06458.1
Gene Name	CKS2
Gene Alias	CKSHS2
Gene Description	CDC28 protein kinase regulatory subunit 2
Omim ID	116901
Gene Ontology	Hyperlink
Gene Summary	CKS2 protein binds to the catalytic subunit of the cyclin dependent kinases and is essential for their biological function. The CKS2 mRNA is found to be expressed in different patterns through the cell cycle in HeLa cells, which reflects specialized role for the encoded protein. [provided by RefSeq]
Other Designations	CDC28 protein kinase 2 CKS1(S. cerevisiae Cdc28/Cdc2 kinase subunit) homolog-2 OTTHUMP00000021616