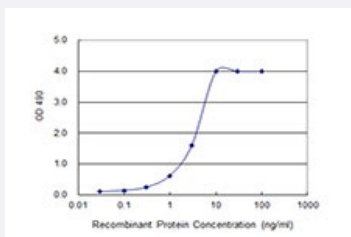


# CKS2 (Human) Matched Antibody Pair

Catalog # H00001164-AP43

Size 1 Set

## Applications



Sandwich ELISA detection sensitivity ranging from 0.03 ng/ml to 100 ng/ml.

## Specification

### Product Description

This antibody pair set comes with a matched antibody pair to detect and quantify the protein level of human CKS2.

### Reactivity

Human

### Quality Control Testing

Standard curve using recombinant protein ( H00001164-P01 ) as an analyte.  
Sandwich ELISA detection sensitivity ranging from 0.03 ng/ml to 100 ng/ml.

### Supplied Product

Antibody pair set content:

1. Capture antibody: mouse monoclonal anti-CKS2, IgG2a Kappa (100 ug)
  2. Detection antibody: biotinylated mouse monoclonal anti-CKS2, IgG2b Kappa (50 ug)
- \*Reagents are sufficient for at least 3-5 x 96 well plates using recommended protocols.

### Storage Instruction

Store reagents of the antibody pair set at -20°C or lower. Please aliquot to avoid repeated freeze thaw cycle. Reagents should be returned to -20°C storage immediately after use.

## Applications

- ELISA Pair (Recombinant protein)

[Protocol Download](#)

## Gene Info — CKS2

Entrez GeneID	<a href="#">1164</a>
Gene Name	CKS2
Gene Alias	CKSHS2
Gene Description	CDC28 protein kinase regulatory subunit 2
Omim ID	<a href="#">116901</a>
Gene Ontology	<a href="#">Hyperlink</a>
Gene Summary	CKS2 protein binds to the catalytic subunit of the cyclin dependent kinases and is essential for their biological function. The CKS2 mRNA is found to be expressed in different patterns through the cell cycle in HeLa cells, which reflects specialized role for the encoded protein. [provided by RefSeq]
Other Designations	CDC28 protein kinase 2 CKS1(S. cerevisiae Cdc28/Cdc2 kinase subunit) homolog-2 OTTHUMP00000021616