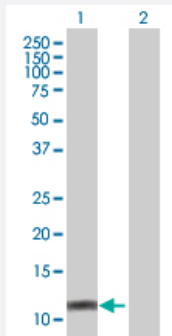


# CKS1B 293T Cell Transient Overexpression Lysate(Denatured)

Catalog # H00001163-T01

Size 100 uL

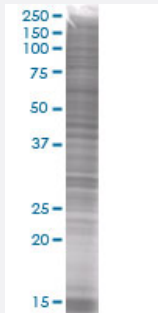
## Applications



### Western Blot

Lane 1: CKS1B transfected lysate ( 8.69 KDa)

Lane 2: Non-transfected lysate.



### SDS-PAGE Gel

CKS1B transfected lysate.

## Specification

### Product Description

Transfected Cell Line	293T
Plasmid	pCMV-CKS1 full-length
Host	Human
Theoretical MW (kDa)	8.8

## Quality Control Testing

Transient overexpression cell lysate was tested with Anti-CKS1 antibody ([H00001163-B01](#)) by Western Blots.

Western Blot

Lane 1: CKS1B transfected lysate ( 8.69 KDa)

Lane 2: Non-transfected lysate.

SDS-PAGE Gel

CKS1B transfected lysate.

## Storage Buffer

1X Sample Buffer (50 mM Tris-HCl, 2% SDS, 10% glycerol, 300 mM 2-mercaptoethanol, 0.01% Bromophenol blue)

## Storage Instruction

Store at -80°C. Aliquot to avoid repeated freezing and thawing.

## Applications

- Western Blot

## Gene Info — CKS1B

## Entrez GeneID

[1163](#)

## GeneBank Accession#

[BC007751](#)

## Protein Accession#

[AAH07751](#)

## Gene Name

CKS1B

## Gene Alias

CKS1, PNAS-16, PNAS-18, ckshs1

## Gene Description

CDC28 protein kinase regulatory subunit 1B

## Omim ID

[116900](#)

## Gene Ontology

[Hyperlink](#)

## Gene Summary

CKS1B protein binds to the catalytic subunit of the cyclin dependent kinases and is essential for their biological function. The CKS1B mRNA is found to be expressed in different patterns through the cell cycle in HeLa cells, which reflects a specialized role for the encoded protein. At least two transcript variants have been identified for this gene, and it appears that only one of them encodes a protein. [provided by RefSeq]

## Other Designations

CDC2-associated protein CKS1|CDC28 protein kinase 1|CDC28 protein kinase 1B|NB4 apoptosis/differentiation related protein|OTTHUMP00000035541|PNAS-143|cell division control protein CKS1|cyclin-dependent kinases regulatory subunit 1

## Pathway

- [Pathways in cancer](#)
- [Small cell lung cancer](#)

## Disease

- [Tobacco Use Disorder](#)