

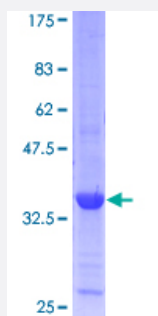
Full-Length

CKS1B (Human) Recombinant Protein (P01)

Catalog # H00001163-P01

Size 25 ug, 10 ug

Applications



Specification

Product Description	Human CKS1B full-length ORF (AAH07751, 1 a.a. - 79 a.a.) recombinant protein with GST-tag at N-terminal.
Sequence	MSHKQIYSDKYDDEEFYRHVMLPKDIAKLVPKTHLMSESEWRNLGVQQSQGWVHYMIHEPEP HILLFRRPLPKKPKK
Host	Wheat Germ (in vitro)
Theoretical MW (kDa)	34.32
Preparation Method	in vitro wheat germ expression system
Purification	Glutathione Sepharose 4 Fast Flow
Quality Control Testing	12.5% SDS-PAGE Stained with Coomassie Blue.
Storage Buffer	50 mM Tris-HCl, 10 mM reduced Glutathione, pH=8.0 in the elution buffer.
Storage Instruction	Store at -80°C. Aliquot to avoid repeated freezing and thawing.
Note	Best use within three months from the date of receipt of this protein.

Applications

- Enzyme-linked Immunoabsorbent Assay
- Western Blot (Recombinant protein)
- Antibody Production
- Protein Array

Gene Info — CKS1B

Entrez GeneID	1163
GeneBank Accession#	BC007751.1
Protein Accession#	AAH07751
Gene Name	CKS1B
Gene Alias	CKS1, PNAS-16, PNAS-18, ckshs1
Gene Description	CDC28 protein kinase regulatory subunit 1B
Omim ID	116900
Gene Ontology	Hyperlink
Gene Summary	CKS1B protein binds to the catalytic subunit of the cyclin dependent kinases and is essential for their biological function. The CKS1B mRNA is found to be expressed in different patterns through the cell cycle in HeLa cells, which reflects a specialized role for the encoded protein. At least two transcript variants have been identified for this gene, and it appears that only one of them encodes a protein. [provided by RefSeq]
Other Designations	CDC2-associated protein CKS1 CDC28 protein kinase 1 CDC28 protein kinase 1B NB4 apoptosis/differentiation related protein OTTHUMP0000003554.1 PNAS-143 cell division control protein CKS1 cyclin-dependent kinases regulatory subunit 1

Pathway

- [Pathways in cancer](#)

- [Small cell lung cancer](#)

Disease

- [Tobacco Use Disorder](#)