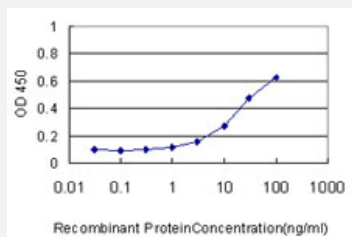


CKS1B monoclonal antibody (M01), clone 3G8

Catalog # H00001163-M01

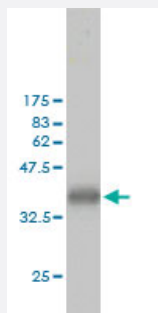
Size 100 ug

Applications



Sandwich ELISA (Recombinant protein)

Detection limit for recombinant GST tagged CKS1B is approximately 3ng/ml as a capture antibody.



Western Blot detection against Immunogen (34.43 KDa) .

Specification

Product Description	Mouse monoclonal antibody raised against a partial recombinant CKS1B.
Immunogen	CKS1B (NP_001817, 1 a.a. ~ 79 a.a) partial recombinant protein with GST tag. MW of the GST tag alone is 26 KDa.
Sequence	MSHKQIYSDKYDDEEFYRHVMLPKDIAKLVPKTHLMSESEWRNLGVQQSQGWVHYMIHEPEP HILLFRRPLPKKPKK
Host	Mouse
Reactivity	Human
Isotype	IgG1 kappa

Quality Control Testing

Antibody Reactive Against Recombinant Protein.
Western Blot detection against Immunogen (34.43 KDa) .

Storage Buffer

In 1x PBS, pH 7.4

Storage Instruction

Store at -20°C or lower. Aliquot to avoid repeated freezing and thawing.

Applications

- Western Blot (Recombinant protein)

[Protocol Download](#)

- Sandwich ELISA (Recombinant protein)

Detection limit for recombinant GST tagged CKS1B is approximately 3ng/ml as a capture antibody.

[Protocol Download](#)

- ELISA

Gene Info — CKS1B

Entrez GeneID

[1163](#)

GeneBank Accession#

[NM_001826](#)

Protein Accession#

[NP_001817](#)

Gene Name

CKS1B

Gene Alias

CKS1, PNAS-16, PNAS-18, ckshs1

Gene Description

CDC28 protein kinase regulatory subunit 1B

Omim ID

[116900](#)

Gene Ontology

[Hyperlink](#)

Gene Summary

CKS1B protein binds to the catalytic subunit of the cyclin dependent kinases and is essential for their biological function. The CKS1B mRNA is found to be expressed in different patterns through the cell cycle in HeLa cells, which reflects a specialized role for the encoded protein. At least two transcript variants have been identified for this gene, and it appears that only one of them encodes a protein. [provided by RefSeq]

Other Designations

CDC2-associated protein CKS1|CDC28 protein kinase 1|CDC28 protein kinase 1B|NB4 apoptosis/differentiation related protein|OTTHUMP00000035541|PNAS-143|cell division control protein CKS1|cyclin-dependent kinases regulatory subunit 1

Pathway

- [Pathways in cancer](#)
- [Small cell lung cancer](#)

Disease

- [Tobacco Use Disorder](#)