

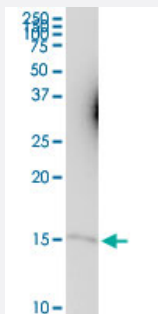
MaxPab®

CKS1B purified MaxPab mouse polyclonal antibody (B01P)

Catalog # H00001163-B01P

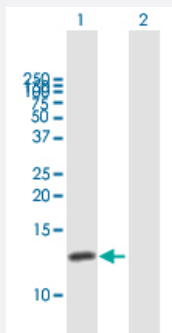
Size 50 ug

Applications



Western Blot (Tissue lysate)

CKS1B MaxPab polyclonal antibody. Western Blot analysis of CKS1B expression in rat brain.



Western Blot (Transfected lysate)

Western Blot analysis of CKS1B expression in transfected 293T cell line ([H00001163-T01](#)) by CKS1B MaxPab polyclonal antibody.

Lane 1: CKS1B transfected lysate(8.69 KDa).

Lane 2: Non-transfected lysate.

Specification

Product Description	Mouse polyclonal antibody raised against a full-length human CKS1B protein.
Immunogen	CKS1B (AAH07751.1, 1 a.a. ~ 79 a.a) full-length human protein.
Sequence	MSHKQIYSDKYDDEEFYRHVMLPKDIAKLVPKTHLMSESEWRNLGVQQSQGWVHYMIHEPEP HILLFRRPLPKKPKK
Host	Mouse
Reactivity	Human, Rat
Quality Control Testing	Antibody reactive against mammalian transfected lysate.

Storage Buffer

In 1x PBS, pH 7.4

Storage Instruction

Store at -20°C or lower. Aliquot to avoid repeated freezing and thawing.

Applications

- Western Blot (Tissue lysate)

CKS1B MaxPab polyclonal antibody. Western Blot analysis of CKS1B expression in rat brain.

[Protocol Download](#)

- Western Blot (Transfected lysate)

Western Blot analysis of CKS1B expression in transfected 293T cell line ([H00001163-T01](#)) by CKS1B MaxPab polyclonal antibody.

Lane 1: CKS1B transfected lysate(8.69 KDa).

Lane 2: Non-transfected lysate.

[Protocol Download](#)

Gene Info — CKS1B

Entrez GeneID[1163](#)**GeneBank Accession#**[BC007751.1](#)**Protein Accession#**[AAH07751.1](#)**Gene Name**

CKS1B

Gene Alias

CKS1, PNAS-16, PNAS-18, ckshs1

Gene Description

CDC28 protein kinase regulatory subunit 1B

Omim ID[116900](#)**Gene Ontology**[Hyperlink](#)**Gene Summary**

CKS1B protein binds to the catalytic subunit of the cyclin dependent kinases and is essential for their biological function. The CKS1B mRNA is found to be expressed in different patterns through the cell cycle in HeLa cells, which reflects a specialized role for the encoded protein. At least two transcript variants have been identified for this gene, and it appears that only one of them encodes a protein. [provided by RefSeq]

Other Designations

CDC2-associated protein CKS1|CDC28 protein kinase 1|CDC28 protein kinase 1B|NB4 apoptosis/differentiation related protein|OTTHUMP00000035541|PNAS-143|cell division control protein CKS1|cyclin-dependent kinases regulatory subunit 1

Pathway

- [Pathways in cancer](#)
- [Small cell lung cancer](#)

Disease

- [Tobacco Use Disorder](#)