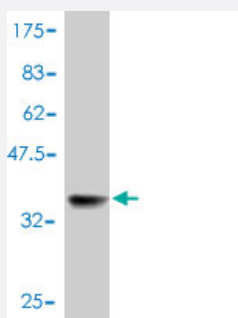


CKS1B polyclonal antibody (A01)

Catalog # H00001163-A01

Size 50 uL

Applications



Western Blot detection against Immunogen (34.8 KDa) .

Specification

Product Description	Mouse polyclonal antibody raised against a partial recombinant CKS1B.
Immunogen	CKS1B (NP_001817, 1 a.a. ~ 79 a.a) partial recombinant protein with GST tag.
Sequence	MSHKQIYSDKYDDEEFYRHVMLPKDIAKLVPKTHLMSESEWRNLGVQQSQGWVHYMIHEPEP HILLFRRPLPKPKPKK
Host	Mouse
Reactivity	Human
Quality Control Testing	Antibody Reactive Against Recombinant Protein. Western Blot detection against Immunogen (34.8 KDa) .
Storage Buffer	50 % glycerol
Storage Instruction	Store at -20°C or lower. Aliquot to avoid repeated freezing and thawing.

Applications

- Western Blot (Recombinant protein)

[Protocol Download](#)

- ELISA

Gene Info — CKS1B

Entrez GeneID [1163](#)

GeneBank Accession# [NM_001826](#)

Protein Accession# [NP_001817](#)

Gene Name CKS1B

Gene Alias CKS1, PNAS-16, PNAS-18, ckshs1

Gene Description CDC28 protein kinase regulatory subunit 1B

Omim ID [116900](#)

Gene Ontology [Hyperlink](#)

Gene Summary CKS1B protein binds to the catalytic subunit of the cyclin dependent kinases and is essential for their biological function. The CKS1B mRNA is found to be expressed in different patterns through the cell cycle in HeLa cells, which reflects a specialized role for the encoded protein. At least two transcript variants have been identified for this gene, and it appears that only one of them encodes a protein. [provided by RefSeq]

Other Designations CDC2-associated protein CKS1|CDC28 protein kinase 1|CDC28 protein kinase 1B|NB4 apoptosis/differentiation related protein|OTTHUMP00000035541|PNAS-143|cell division control protein CKS1|cyclin-dependent kinases regulatory subunit 1

Pathway

- [Pathways in cancer](#)
- [Small cell lung cancer](#)

Disease

- [Tobacco Use Disorder](#)