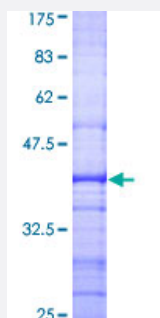


# CISH (Human) Recombinant Protein (Q01)

Catalog # H00001154-Q01

Size 25 ug, 10 ug

## Applications



## Specification

<b>Product Description</b>	Human CISH partial ORF ( AAH31590, 1 a.a. - 110 a.a.) recombinant protein with GST-tag at N-terminal.
<b>Sequence</b>	MVLCVQGPRLLAVERTGQRPLWAPSLELPKPV MQPLPAGAFLEEVAEGTPAQTESEPKVLDP EEDLLCIAKTFSYLRESGWYWG SITASEARQHLQKMPEGTFLVRDST
<b>Host</b>	Wheat Germ (in vitro)
<b>Theoretical MW (kDa)</b>	37.84
<b>Preparation Method</b>	<a href="#">in vitro wheat germ expression system</a>
<b>Purification</b>	Glutathione Sepharose 4 Fast Flow
<b>Quality Control Testing</b>	12.5% SDS-PAGE Stained with Coomassie Blue.
<b>Storage Buffer</b>	50 mM Tris-HCl, 10 mM reduced Glutathione, pH=8.0 in the elution buffer.
<b>Storage Instruction</b>	Store at -80°C. Aliquot to avoid repeated freezing and thawing.
<b>Note</b>	Best use within three months from the date of receipt of this protein.

## Applications

- Enzyme-linked Immunoabsorbent Assay
- Western Blot (Recombinant protein)
- Antibody Production
- Protein Array

## Gene Info — CISH

**Entrez GeneID** [1154](#)

**GeneBank Accession#** [BC031590](#)

**Protein Accession#** [AAH31590](#)

**Gene Name** CISH

**Gene Alias** CIS, CIS-1, G18, SOCS

**Gene Description** cytokine inducible SH2-containing protein

**Omim ID** [602441](#)

**Gene Ontology** [Hyperlink](#)

**Gene Summary** The protein encoded by this gene contains a SH2 domain and a SOCS box domain. The protein thus belongs to the cytokine-induced STAT inhibitor (CIS), also known as suppressor of cytokine signaling (SOCS) or STAT-induced STAT inhibitor (SSI), protein family. CIS family members are known to be cytokine-inducible negative regulators of cytokine signaling. The expression of this gene can be induced by IL2, IL3, GM-CSF and EPO in hematopoietic cells. Proteasome-mediated degradation of this protein has been shown to be involved in the inactivation of the erythropoietin receptor. Multiple transcript variants encoding different isoforms have been found for this gene. [provided by RefSeq]

**Other Designations** cytokine-inducible SH2-containing protein|cytokine-inducible inhibitor of signaling type 1B|suppressor of cytokine signaling

## Pathway

- [Jak-STAT signaling pathway](#)

## Disease

- [Bacteremia](#)
- [Cardiovascular Diseases](#)
- [Diabetes Mellitus](#)
- [Edema](#)
- [Genetic Predisposition to Disease](#)
- [Malaria](#)
- [Tuberculosis](#)