

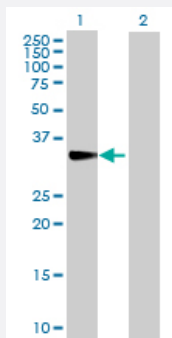
MaxPab®

CISH purified MaxPab rabbit polyclonal antibody (D01P)

Catalog # H00001154-D01P

Size 100 ug

Applications

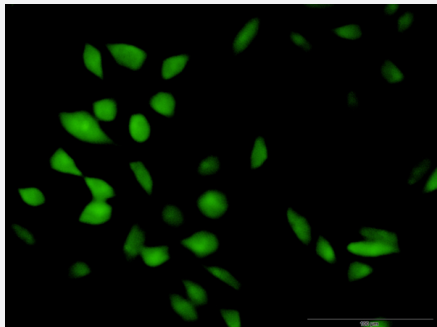


Western Blot (Transfected lysate)

Western Blot analysis of CISH expression in transfected 293T cell line ([H00001154-T01](#)) by CISH MaxPab polyclonal antibody.

Lane 1: CISH transfected lysate(28.70 KDa).

Lane 2: Non-transfected lysate.



Immunofluorescence

Immunofluorescence of purified MaxPab antibody to CISH on HeLa cell. [antibody concentration 10 ug/ml]

Specification

Product Description

Rabbit polyclonal antibody raised against a full-length human CISH protein.

Immunogen

CISH (NP_659508.1, 1 a.a. ~ 258 a.a) full-length human protein.

Sequence

MVLCVQGPRPLLAVERTGQRPLWAPSLELPKPVMQPLPAGAFLEEVAEGTPAQTESEPKVLDP
EEDLLCIAKTFSYLRESGWYWGSIASEARQHLQKMPEGTFLVRDSTHPSYLFSLSVKTTTRGPTNV
RIEYADSSFRLDSNCLSRPRILAFPDVVSLVQHYVASCTADTRSDSPDPAPTPALPMPKEDAPSD
PALPAPPATAVHLKLVQPFVRRSSARSLLQHLCLRLVINRLVADVDCLPLPRRMADYLRQYPFQL

Host

Rabbit

Reactivity

Human

Quality Control Testing	Antibody reactive against mammalian transfected lysate.
Storage Buffer	In 1x PBS, pH 7.4
Storage Instruction	Store at -20°C or lower. Aliquot to avoid repeated freezing and thawing.

Applications

- Western Blot (Transfected lysate)

Western Blot analysis of CISH expression in transfected 293T cell line ([H00001154-T01](#)) by CISH MaxPab polyclonal antibody.

Lane 1: CISH transfected lysate(28.70 KDa).

Lane 2: Non-transfected lysate.

[Protocol Download](#)

- Immunofluorescence

Immunofluorescence of purified MaxPab antibody to CISH on HeLa cell. [antibody concentration 10 ug/ml]

Gene Info — CISH

Entrez GeneID	1154
---------------	----------------------

GeneBank Accession#	NM_145071
---------------------	---------------------------

Protein Accession#	NP_659508.1
--------------------	-----------------------------

Gene Name	CISH
-----------	------

Gene Alias	CIS, CIS-1, G18, SOCS
------------	-----------------------

Gene Description	cytokine inducible SH2-containing protein
------------------	---

Omim ID	602441
---------	------------------------

Gene Ontology	Hyperlink
---------------	---------------------------

Gene Summary	The protein encoded by this gene contains a SH2 domain and a SOCS box domain. The protein thus belongs to the cytokine-induced STAT inhibitor (CIS), also known as suppressor of cytokine signaling (SOCS) or STAT-induced STAT inhibitor (SSI), protein family. CIS family members are known to be cytokine-inducible negative regulators of cytokine signaling. The expression of this gene can be induced by IL2, IL3, GM-CSF and EPO in hematopoietic cells. Proteasome-mediated degradation of this protein has been shown to be involved in the inactivation of the erythropoietin receptor. Multiple transcript variants encoding different isoforms have been found for this gene. [provided by RefSeq]
--------------	---

Other Designations

cytokine-inducible SH2-containing protein|cytokine-inducible inhibitor of signaling type 1B|suppressor of cytokine signaling

Pathway

- [Jak-STAT signaling pathway](#)

Disease

- [Bacteremia](#)
- [Cardiovascular Diseases](#)
- [Diabetes Mellitus](#)
- [Edema](#)
- [Genetic Predisposition to Disease](#)
- [Malaria](#)
- [Tuberculosis](#)