

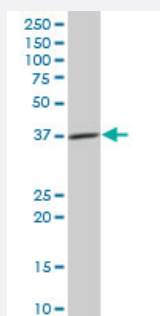
MaxPab®

CISH purified MaxPab mouse polyclonal antibody (B01P)

Catalog # H00001154-B01P

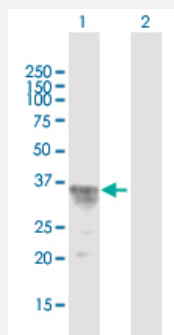
Size 50 ug

Applications



Western Blot (Tissue lysate)

CISH MaxPab polyclonal antibody. Western Blot analysis of CISH expression in human spleen.

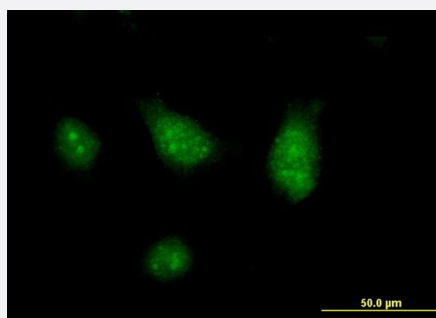


Western Blot (Transfected lysate)

Western Blot analysis of CISH expression in transfected 293T cell line ([H00001154-T01](#)) by CISH MaxPab polyclonal antibody.

Lane 1: CISH transfected lysate(28.38 KDa).

Lane 2: Non-transfected lysate.



Immunofluorescence

Immunofluorescence of purified MaxPab antibody to CISH on HeLa cell. [antibody concentration 10 ug/ml]

Specification

Product Description

Mouse polyclonal antibody raised against a full-length human CISH protein.

Immunogen	CISH (NP_659508.1, 1 a.a. ~ 258 a.a) full-length human protein.
Sequence	MVLCVQGPRLLAVERTGQRPLWAPSLELPKPMQPLPAGAFLEEEVAEGTPAQTESEPKVLDP EEDLLCIAKTFSYLRESGWYWGSITASEARQHLQKMPEGTFLVRDSTHPSYLFSLSVKTTTRGPTNV RIEYADSSFRLLDSNCLSRPRILAFPDVVSLVQHYVASCTADTRSDSPDPAPTPALPMPKEDAPSD PALPAPPPATAVHLKLVQPFVRRSSARSQHLCLRLVINRLVADVDCCLPLPRRMADYLRQYPFQL
Host	Mouse
Reactivity	Human
Quality Control Testing	Antibody reactive against mammalian transfected lysate.
Storage Buffer	In 1x PBS, pH 7.4
Storage Instruction	Store at -20°C or lower. Aliquot to avoid repeated freezing and thawing.

Applications

- Western Blot (Tissue lysate)

CISH MaxPab polyclonal antibody. Western Blot analysis of CISH expression in human spleen.

[Protocol Download](#)

- Western Blot (Transfected lysate)

Western Blot analysis of CISH expression in transfected 293T cell line ([H00001154-T01](#)) by CISH MaxPab polyclonal antibody.

Lane 1: CISH transfected lysate(28.38 KDa).

Lane 2: Non-transfected lysate.

[Protocol Download](#)

- Immunofluorescence

Immunofluorescence of purified MaxPab antibody to CISH on HeLa cell. [antibody concentration 10 ug/ml]

Gene Info — CISH

Entrez GeneID	1154
GeneBank Accession#	NM_145071
Protein Accession#	NP_659508.1
Gene Name	CISH

Gene Alias	CIS, CIS-1, G18, SOCS
Gene Description	cytokine inducible SH2-containing protein
Omim ID	602441
Gene Ontology	Hyperlink
Gene Summary	<p>The protein encoded by this gene contains a SH2 domain and a SOCS box domain. The protein thus belongs to the cytokine-induced STAT inhibitor (CIS), also known as suppressor of cytokine signaling (SOCS) or STAT-induced STAT inhibitor (SSI), protein family. CIS family members are known to be cytokine-inducible negative regulators of cytokine signaling. The expression of this gene can be induced by IL2, IL3, GM-CSF and EPO in hematopoietic cells. Proteasome-mediated degradation of this protein has been shown to be involved in the inactivation of the erythropoietin receptor. Multiple transcript variants encoding different isoforms have been found for this gene. [provided by RefSeq]</p>
Other Designations	cytokine-inducible SH2-containing protein cytokine-inducible inhibitor of signaling type 1B suppressor of cytokine signaling

Pathway

- [Jak-STAT signaling pathway](#)

Disease

- [Bacteremia](#)
- [Cardiovascular Diseases](#)
- [Diabetes Mellitus](#)
- [Edema](#)
- [Genetic Predisposition to Disease](#)
- [Malaria](#)
- [Tuberculosis](#)