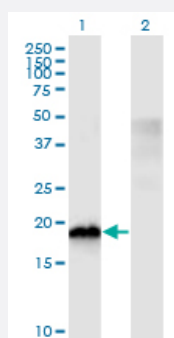


# CIRBP monoclonal antibody (M03), clone 1C9

Catalog # H00001153-M03

Size 100 ug

## Applications

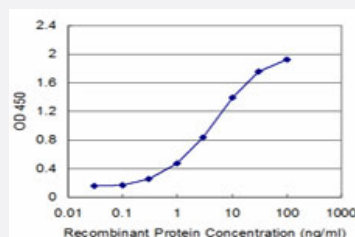


### Western Blot (Transfected lysate)

Western Blot analysis of CIRBP expression in transfected 293T cell line by CIRBP monoclonal antibody (M03), clone 1C9.

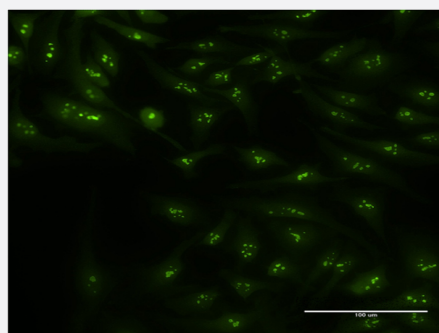
Lane 1: CIRBP transfected lysate (Predicted MW: 18.6 KDa).

Lane 2: Non-transfected lysate.



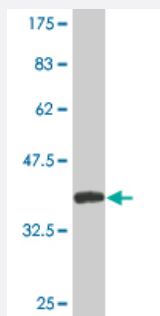
### Sandwich ELISA (Recombinant protein)

Detection limit for recombinant GST tagged CIRBP is approximately 0.3ng/ml as a capture antibody.



### Immunofluorescence

Immunofluorescence of monoclonal antibody to CIRBP on HeLa cell . [antibody concentration 10 ug/ml]



Western Blot detection against Immunogen (35.64 KDa) .

## Specification

<b>Product Description</b>	Mouse monoclonal antibody raised against a partial recombinant CIRBP.
<b>Immunogen</b>	CIRBP (NP_001271.1, 1 a.a. ~ 90 a.a) partial recombinant protein with GST tag. MW of the GST tag alone is 26 KDa.
<b>Sequence</b>	MASDEGKLFVGGLSFDTNEQSLEQVFSKYGQISEVVVVKDRETQSRGFGFVTFENIDDAKDAM MAMNGKSVDGRQIRVDQAGKSSDNRS
<b>Host</b>	Mouse
<b>Reactivity</b>	Human
<b>Interspecies Antigen Sequence</b>	Mouse (99)
<b>Isotype</b>	IgG2a Kappa
<b>Quality Control Testing</b>	Antibody Reactive Against Recombinant Protein. Western Blot detection against Immunogen (35.64 KDa) .
<b>Storage Buffer</b>	In 1x PBS, pH 7.4
<b>Storage Instruction</b>	Store at -20°C or lower. Aliquot to avoid repeated freezing and thawing.

## Applications

### ● Western Blot (Transfected lysate)

Western Blot analysis of CIRBP expression in transfected 293T cell line by CIRBP monoclonal antibody (M03), clone 1C9.

Lane 1: CIRBP transfected lysate (Predicted MW: 18.6 KDa).

Lane 2: Non-transfected lysate.

[Protocol Download](#)

- Western Blot (Recombinant protein)

[Protocol Download](#)

- Sandwich ELISA (Recombinant protein)

Detection limit for recombinant GST tagged CIRBP is approximately 0.3ng/ml as a capture antibody.

[Protocol Download](#)

- ELISA

- Immunofluorescence

Immunofluorescence of monoclonal antibody to CIRBP on HeLa cell . [antibody concentration 10 ug/ml]

## Gene Info — CIRBP

Entrez GeneID	<a href="#">1153</a>
GeneBank Accession#	<a href="#">NM_001280</a>
Protein Accession#	<a href="#">NP_001271.1</a>
Gene Name	CIRBP
Gene Alias	CIRP
Gene Description	cold inducible RNA binding protein
Omim ID	<a href="#">602649</a>
Gene Ontology	<a href="#">Hyperlink</a>
Other Designations	Cold-inducible RNA-binding protein cold inducible RNA-binding protein glycine-rich RNA binding protein