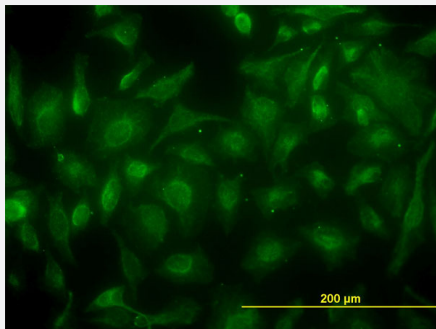


CKB monoclonal antibody (M01), clone 3D5-3D11

Catalog # H00001152-M01

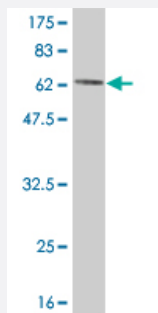
Size 100 ug

Applications



Immunofluorescence

Immunofluorescence of monoclonal antibody to CKB on HeLa cell. [antibody concentration 30 ug/ml]



Western Blot detection against Immunogen (67.65 KDa) .

Specification

Product Description

Mouse monoclonal antibody raised against a full length recombinant CKB.

Immunogen

CKB (AAH01190, 1 a.a. ~ 381 a.a) full-length recombinant protein with GST tag. MW of the GST tag alone is 26 KDa.

Sequence

MPFSNSHNALKLRFPAEDEFDPDLAHNNHMAKVLTPELYAELRAKSTPSGFTLDDVIQTGVDNPG
HPYIMTVGCVAGDEESYEVFKDLFDPIIEDRHGGYKPSDEHKTDLNPDLQGGDDLDPNYVLSSR
VRTGRSIRGFCLPPHCSRGERRAIEKLAVEALSSLDGDLAGRYALKSMTEAEQQQLIDDHFLFDK
PVSPLLLASGMARDWPDARGMWHNDNKTLVWVNEEDHLRVISMQKGGNMKEVFTRFCTGLTQI
ETLFKSKDYEFMWNPHLGYLTCPSNLGTGLRAGVHIKLPNLGKHEKFSEVLKRLRLQKRGTTGGV
DTAAVGGVFDVSNADRLGFSEVELVQMVDGVKLLIEMEQRLEQQQAIDDLMPAQK

Host

Mouse

Reactivity	Human
Interspecies Antigen Sequence	Mouse (97); Rat (97)
Isotype	IgG1 Kappa
Quality Control Testing	Antibody Reactive Against Recombinant Protein. Western Blot detection against Immunogen (67.65 KDa) .
Storage Buffer	In 1x PBS, pH 7.4
Storage Instruction	Store at -20°C or lower. Aliquot to avoid repeated freezing and thawing.

Applications

- Western Blot (Recombinant protein)

[Protocol Download](#)

- ELISA

- Immunofluorescence

Immunofluorescence of monoclonal antibody to CKB on HeLa cell. [antibody concentration 30 ug/ml]

Gene Info — CKB

Entrez GeneID	1152
GeneBank Accession#	BC001190
Protein Accession#	AAH01190
Gene Name	CKB
Gene Alias	B-CK, CKBB
Gene Description	creatine kinase, brain
Omim ID	123280
Gene Ontology	Hyperlink

Gene Summary

The protein encoded by this gene is a cytoplasmic enzyme involved in energy homeostasis. The encoded protein reversibly catalyzes the transfer of phosphate between ATP and various phosphogens such as creatine phosphate. It acts as a homodimer in brain as well as in other tissues, and as a heterodimer with a similar muscle isozyme in heart. The encoded protein is a member of the ATP:guanido phosphotransferase protein family. A pseudogene of this gene has been characterized. [provided by RefSeq]

Other Designations

brain creatine kinase|creatine kinase B-chain|creatine kinase-B

Pathway

- [Arginine and proline metabolism](#)
- [Metabolic pathways](#)

Disease

- [Macular Degeneration](#)