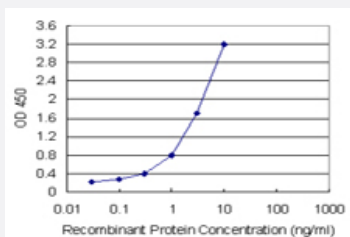


CHN1 (Human) Matched Antibody Pair

Catalog # H00001123-AP21

Size 1 Set

Applications



Sandwich ELISA detection sensitivity ranging from 0.1 ng/ml to 100 ng/ml.

Specification

Product Description	This antibody pair set comes with a matched antibody pair to detect and quantify the protein level of human CHN1.
Reactivity	Human
Quality Control Testing	Standard curve using recombinant protein (H00001123-P01) as an analyte. Sandwich ELISA detection sensitivity ranging from 0.1 ng/ml to 100 ng/ml.
Supplied Product	Antibody pair set content: 1. Capture antibody: rabbit MaxPab® affinity purified polyclonal anti-CHN1 (100 ug) 2. Detection antibody: mouse polyclonal anti-CHN1 (40 ul) *Reagents are sufficient for at least 3-5 x 96 well plates using recommended protocols.
Storage Instruction	Store reagents of the antibody pair set at -20°C or lower. Please aliquot to avoid repeated freeze thaw cycle. Reagents should be returned to -20°C storage immediately after use.

Applications

- ELISA Pair (Recombinant protein)

[Protocol Download](#)

Gene Info — CHN1

Entrez GeneID [1123](#)**Gene Name** CHN1**Gene Alias** ARHGAP2, CHN, DURS2, RHOGAP2**Gene Description** chimerin (chimaerin) 1**Omim ID** [118423](#)**Gene Ontology** [Hyperlink](#)

Gene Summary This gene encodes GTPase-activating protein for p21-rac and a phorbol ester receptor. It plays a n important role in ocular motor axon pathfinding. Heterozygous missense mutations in this gene c ause Duane's retraction syndrome 2 (DURS2). Multiple transcript variants encoding different isofo rms have been found for this gene. [provided by RefSeq

Other Designations A-chimaerin|Chimerin 1 (GTPase-activating protein, rho, 2)|Rho GTPase-activating protein 2|a2-c himaerin|alpha-chimerin|n-chimerin

Disease

- [Alcoholism](#)
- [Conduct Disorder](#)
- [Tobacco Use Disorder](#)