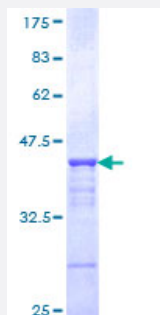


# CHD3 (Human) Recombinant Protein (Q01)

Catalog # H00001107-Q01

Size 25 ug, 10 ug

## Applications



## Specification

<b>Product Description</b>	Human CHD3 partial ORF ( NP_001005273, 1654 a.a. - 1741 a.a.) recombinant protein with GST-tag at N-terminal.
<b>Sequence</b>	KPLDGQEHRRERPEGETGDLGKREDVKGDRELRPGPRDEPRSNRGREEKTEKPRFMFNIADGGF TELHTLWQNEERAAISSGKLNEWH
<b>Host</b>	Wheat Germ (in vitro)
<b>Theoretical MW (kDa)</b>	35.42
<b>Interspecies Antigen Sequence</b>	Mouse (92)
<b>Preparation Method</b>	<a href="#">in vitro wheat germ expression system</a>
<b>Purification</b>	Glutathione Sepharose 4 Fast Flow
<b>Quality Control Testing</b>	12.5% SDS-PAGE Stained with Coomassie Blue.
<b>Storage Buffer</b>	50 mM Tris-HCl, 10 mM reduced Glutathione, pH=8.0 in the elution buffer.
<b>Storage Instruction</b>	Store at -80°C. Aliquot to avoid repeated freezing and thawing.
<b>Note</b>	Best use within three months from the date of receipt of this protein.

## Applications

- Enzyme-linked Immunoabsorbent Assay
- Western Blot (Recombinant protein)
- Antibody Production
- Protein Array

## Gene Info — CHD3

Entrez GeneID [1107](#)

GeneBank Accession# [NM\\_001005273](#)

Protein Accession# [NP\\_001005273](#)

Gene Name CHD3

Gene Alias Mi-2a, Mi2-ALPHA, ZFH

Gene Description chromodomain helicase DNA binding protein 3

Omim ID [602120](#)

Gene Ontology [Hyperlink](#)

**Gene Summary** This gene encodes a member of the CHD family of proteins which are characterized by the presence of chromo (chromatin organization modifier) domains and SNF2-related helicase/ATPase domains. This protein is one of the components of a histone deacetylase complex referred to as the Mi-2/NuRD complex which participates in the remodeling of chromatin by deacetylating histones. Chromatin remodeling is essential for many processes including transcription. Autoantibodies against this protein are found in a subset of patients with dermatomyositis. Three alternatively spliced transcripts encoding different isoforms have been described. [provided by RefSeq]

**Other Designations** zinc-finger helicase (Snf2-like)