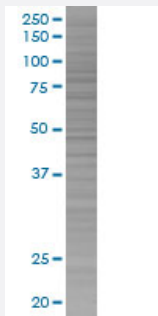


# CHD2 293T Cell Transient Overexpression Lysate(Denatured)

Catalog # H00001106-T01

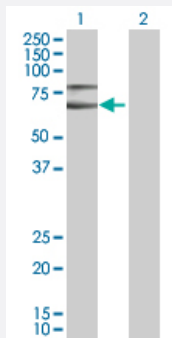
Size 100 uL

## Applications



### SDS-PAGE Gel

CHD2 transfected lysate.



### Western Blot

Lane 1: CHD2 transfected lysate ( 56.8 KDa)

Lane 2: Non-transfected lysate.

## Specification

Transfected Cell Line	293T
Plasmid	pCMV-CHD2 full-length
Host	Human
Theoretical MW (kDa)	56.8
Interspecies Antigen Sequence	Mouse (96); Rat (96)

**Quality Control Testing**

Transient overexpression cell lysate was tested with Anti-CHD2 antibody ([H00001106-B01](#)) by Western Blots.  
SDS-PAGE Gel  
CHD2 transfected lysate.  
Western Blot  
Lane 1: CHD2 transfected lysate ( 56.8 KDa)  
Lane 2: Non-transfected lysate.

**Storage Buffer**

1X Sample Buffer (50 mM Tris-HCl, 2% SDS, 10% glycerol, 300 mM 2-mercaptoethanol, 0.01% Bromophenol blue)

**Storage Instruction**

Store at -80°C. Aliquot to avoid repeated freezing and thawing.

## Applications

- Western Blot

## Gene Info — CHD2

**Entrez GeneID**[1106](#)**GeneBank Accession#**[NM\\_001042572.1](#)**Protein Accession#**[-](#)**Gene Name**

CHD2

**Gene Alias**

DKFZp547I1315, DKFZp686E01200, DKFZp781D1727, FLJ38614

**Gene Description**

chromodomain helicase DNA binding protein 2

**Omim ID**[602119](#)**Gene Ontology**[Hyperlink](#)**Gene Summary**

The CHD family of proteins is characterized by the presence of chromo (chromatin organization modifier) domains and SNF2-related helicase/ATPase domains. CHD genes alter gene expression possibly by modification of chromatin structure thus altering access of the transcriptional apparatus to its chromosomal DNA template. Alternatively spliced transcript variants encoding distinct isoforms have been found for this gene. [provided by RefSeq]

**Other Designations**[-](#)

## Disease

- [Tobacco Use Disorder](#)