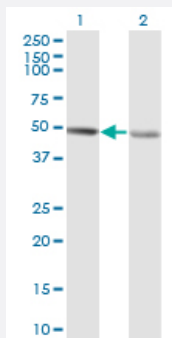


# RCC1 monoclonal antibody (M02), clone 1C1

Catalog # H00001104-M02

Size 100 ug

## Applications

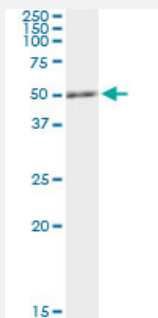


### Western Blot (Transfected lysate)

Western Blot analysis of RCC1 expression in transfected 293T cell line by RCC1 monoclonal antibody (M02), clone 1C1.

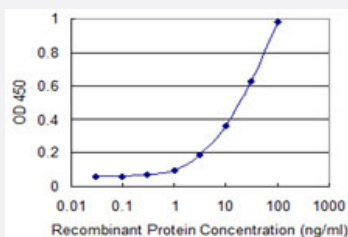
Lane 1: RCC1 transfected lysate (45 kDa).

Lane 2: Non-transfected lysate.



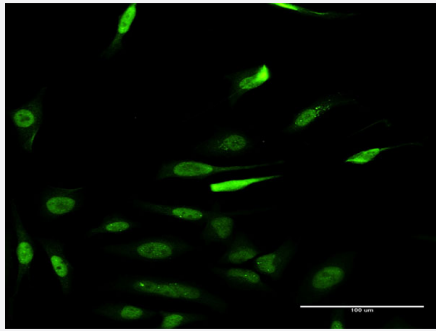
### Immunoprecipitation

Immunoprecipitation of RCC1 transfected lysate using anti-RCC1 monoclonal antibody and Protein A Magnetic Bead, and immunoblotted with RCC1 MaxPab rabbit polyclonal antibody.



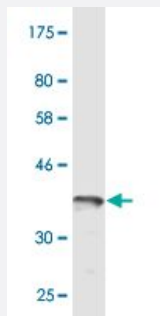
### Sandwich ELISA (Recombinant protein)

Detection limit for recombinant GST tagged RCC1 is 0.3 ng/ml as a capture antibody.



## Immunofluorescence

Immunofluorescence of monoclonal antibody to RCC1 on HeLa cell . [antibody concentration 15 ug/ml]



Western Blot detection against Immunogen (37.73 KDa) .

## Specification

<b>Product Description</b>	Mouse monoclonal antibody raised against a partial recombinant RCC1.
<b>Immunogen</b>	RCC1 (AAH07300, 312 a.a. ~ 421 a.a) partial recombinant protein with GST tag. MW of the GST tag alone is 26 KDa.
<b>Sequence</b>	EGKAYSLGRAEYGRLLGEGAEKSIPTLISRLPAVSSVACGASVGAYATKDGRVFAWGMGTNYQLGTGQDEDAWSPVEMMGKQLENRVVLSVSSGGQHTVLLVKDKEQS
<b>Host</b>	Mouse
<b>Reactivity</b>	Human
<b>Isotype</b>	IgG1 Kappa
<b>Quality Control Testing</b>	Antibody Reactive Against Recombinant Protein. Western Blot detection against Immunogen (37.73 KDa) .
<b>Storage Buffer</b>	In 1x PBS, pH 7.4
<b>Storage Instruction</b>	Store at -20°C or lower. Aliquot to avoid repeated freezing and thawing.

## Applications

- Western Blot (Transfected lysate)

Western Blot analysis of RCC1 expression in transfected 293T cell line by RCC1 monoclonal antibody (M02), clone 1C1.

Lane 1: RCC1 transfected lysate(45 KDa).

Lane 2: Non-transfected lysate.

[Protocol Download](#)

- Western Blot (Recombinant protein)

[Protocol Download](#)

- Immunoprecipitation

Immunoprecipitation of RCC1 transfected lysate using anti-RCC1 monoclonal antibody and Protein A Magnetic Bead, and immunoblotted with RCC1 MaxPab rabbit polyclonal antibody.

[Protocol Download](#)

- Sandwich ELISA (Recombinant protein)

Detection limit for recombinant GST tagged RCC1 is 0.3 ng/ml as a capture antibody.

[Protocol Download](#)

- ELISA

- Immunofluorescence

Immunofluorescence of monoclonal antibody to RCC1 on HeLa cell . [antibody concentration 15 ug/ml]

## Gene Info — RCC1

Entrez GeneID [1104](#)

GeneBank Accession# [BC007300](#)

Protein Accession# [AAH07300](#)

Gene Name RCC1

Gene Alias CHC1, RCC1-I

Gene Description regulator of chromosome condensation 1

Omim ID [179710](#)

Gene Ontology [Hyperlink](#)

**Other Designations**

OTTHUMP00000003775|OTTHUMP00000003776|OTTHUMP00000003777|chromosome condensation 1|guanine nucleotide-releasing protein

---