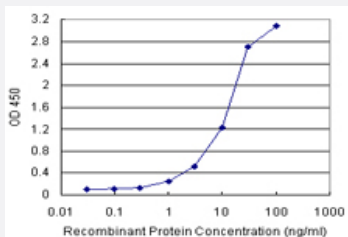


RCC1 (Human) Matched Antibody Pair

Catalog # H00001104-AP21

Size 1 Set

Applications



Sandwich ELISA detection sensitivity ranging from 1 ng/ml to 100 ng/ml.

Specification

Product Description	This antibody pair set comes with a matched antibody pair to detect and quantify the protein level of human RCC1.
Reactivity	Human
Quality Control Testing	Standard curve using recombinant protein (H00001104-P01) as an analyte. Sandwich ELISA detection sensitivity ranging from 1 ng/ml to 100 ng/ml.
Supplied Product	Antibody pair set content: 1. Capture antibody: rabbit MaxPab® affinity purified polyclonal anti-RCC1 (100 ug) 2. Detection antibody: mouse purified polyclonal anti-RCC1 (20 ug) *Reagents are sufficient for at least 1-2 x 96 well plates using recommended protocols.
Storage Instruction	Store reagents of the antibody pair set at -20°C or lower. Please aliquot to avoid repeated freeze thaw cycle. Reagents should be returned to -20°C storage immediately after use.

Applications

- ELISA Pair (Recombinant protein)

[Protocol Download](#)

Gene Info — RCC1

Entrez GeneID	1104
Gene Name	RCC1
Gene Alias	CHC1, RCC1-I
Gene Description	regulator of chromosome condensation 1
Omim ID	179710
Gene Ontology	Hyperlink
Other Designations	OTTHUMP00000003775 OTTHUMP00000003776 OTTHUMP00000003777 chromosome condensation 1 guanine nucleotide-releasing protein