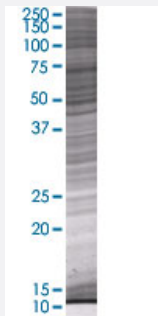


RCBTB2 293T Cell Transient Overexpression Lysate(Denatured)

Catalog # H00001102-T01

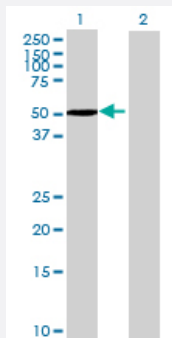
Size 100 uL

Applications



SDS-PAGE Gel

RCBTB2 transfected lysate.



Western Blot

Lane 1: RCBTB2 transfected lysate (60.72 KDa)

Lane 2: Non-transfected lysate.

Specification

Transfected Cell Line	293T
Plasmid	pCMV-RCBTB2 full-length
Host	Human
Theoretical MW (kDa)	60.72
Interspecies Antigen Sequence	Mouse (95); Rat (95)

Quality Control Testing

Transient overexpression cell lysate was tested with Anti-RCBTB2 antibody ([H00001102-B01](#)) by Western Blots.
SDS-PAGE Gel
RCBTB2 transfected lysate.
Western Blot
Lane 1: RCBTB2 transfected lysate (60.72 KDa)
Lane 2: Non-transfected lysate.

Storage Buffer

1X Sample Buffer (50 mM Tris-HCl, 2% SDS, 10% glycerol, 300 mM 2-mercaptoethanol, 0.01% Bromophenol blue)

Storage Instruction

Store at -80°C. Aliquot to avoid repeated freezing and thawing.

Applications

- Western Blot

Gene Info — RCBTB2

Entrez GeneID[1102](#)**GeneBank Accession#**[NM_001268.2](#)**Protein Accession#**[NP_001259.1](#)**Gene Name**

RCBTB2

Gene Alias

CHC1L

Gene Description

regulator of chromosome condensation (RCC1) and BTB (POZ) domain containing protein 2

Omim ID[603524](#)**Gene Ontology**[Hyperlink](#)**Gene Summary**

This gene encodes a member of the RCC1-related GEF family. The N-terminal half of the encoded amino acid sequence shows similarity to the regulator of chromosome condensation RCC1, which acts as a guanine nucleotide exchange factor (GEF) protein for the Ras-related GTPase Ran. [provided by RefSeq]

Other Designations

OTTHUMP00000018399|RCC1-like G exchanging factor RLGL|chromosome condensation 1-like|regulator of chromosome condensation and BTB domain containing protein 2

Disease

- [Tobacco Use Disorder](#)