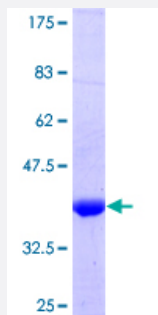


RCBTB2 (Human) Recombinant Protein (Q01)

Catalog # H00001102-Q01

Size 25 ug, 10 ug

Applications



Specification

Product Description	Human RCBTB2 partial ORF (NP_001259, 86 a.a. - 194 a.a.) recombinant protein with GST-tag at N-terminal.
Sequence	TIEPRRLDSLNGKKIACLSYGSGPHVLATTEGEVFTWGHNAYSQNLGNGTTNHGLVPCHISTNLSNK QVIEVACGSYHSLVLTSDGEVFAWGYNNSGQVGSGSTVNQPI
Host	Wheat Germ (in vitro)
Theoretical MW (kDa)	37.73
Interspecies Antigen Sequence	Mouse (96); Rat (96)
Preparation Method	in vitro wheat germ expression system
Purification	Glutathione Sepharose 4 Fast Flow
Quality Control Testing	12.5% SDS-PAGE Stained with Coomassie Blue.
Storage Buffer	50 mM Tris-HCl, 10 mM reduced Glutathione, pH=8.0 in the elution buffer.
Storage Instruction	Store at -80°C. Aliquot to avoid repeated freezing and thawing.
Note	Best use within three months from the date of receipt of this protein.

Applications

- Enzyme-linked Immunoabsorbent Assay
- Western Blot (Recombinant protein)
- Antibody Production
- Protein Array

Gene Info — RCBTB2

Entrez GeneID	1102
GeneBank Accession#	NM_001268
Protein Accession#	NP_001259
Gene Name	RCBTB2
Gene Alias	CHC1L
Gene Description	regulator of chromosome condensation (RCC1) and BTB (POZ) domain containing protein 2
Omim ID	603524
Gene Ontology	Hyperlink
Gene Summary	This gene encodes a member of the RCC1-related GEF family. The N-terminal half of the encoded amino acid sequence shows similarity to the regulator of chromosome condensation RCC1, which acts as a guanine nucleotide exchange factor (GEF) protein for the Ras-related GTPase Ran. [provided by RefSeq]
Other Designations	OTTHUMP00000018399 RCC1-like G exchanging factor RLG chromosome condensation 1-like regulator of chromosome condensation and BTB domain containing protein 2

Disease

- [Tobacco Use Disorder](#)