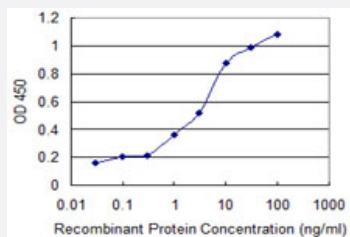


RCBTB2 monoclonal antibody (M01), clone 2G4

Catalog # H00001102-M01

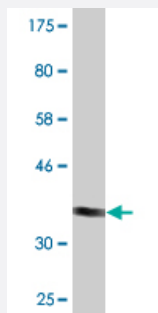
Size 100 ug

Applications



Sandwich ELISA (Recombinant protein)

Detection limit for recombinant GST tagged RCBTB2 is 0.3 ng/ml as a capture antibody.



Western Blot detection against Immunogen (37.73 KDa) .

Specification

Product Description	Mouse monoclonal antibody raised against a partial recombinant RCBTB2.
Immunogen	RCBTB2 (NP_001259, 86 a.a. ~ 194 a.a) partial recombinant protein with GST tag. MW of the GST tag alone is 26 KDa.
Sequence	TIEPRRLDSLNGKKIACLSYGSGPHVLATTEGEVFTWGHNAYSQLGNGTTNHGLVPCHISTNLSNK QVIEVACGSYHSLVLTSDGEVFAWGYNNSGQVGSGSTVNQPI
Host	Mouse
Reactivity	Human

Interspecies Antigen Sequence	Mouse (96); Rat (96)
Isotype	IgG2b Kappa
Quality Control Testing	Antibody Reactive Against Recombinant Protein. Western Blot detection against Immunogen (37.73 KDa) .
Storage Buffer	In 1x PBS, pH 7.4
Storage Instruction	Store at -20°C or lower. Aliquot to avoid repeated freezing and thawing.

Applications

- Western Blot (Recombinant protein)

[Protocol Download](#)

- Sandwich ELISA (Recombinant protein)

Detection limit for recombinant GST tagged RCBTB2 is 0.3 ng/ml as a capture antibody.

[Protocol Download](#)

- ELISA

Gene Info — RCBTB2

Entrez GeneID	1102
GeneBank Accession#	NM_001268
Protein Accession#	NP_001259
Gene Name	RCBTB2
Gene Alias	CHC1L
Gene Description	regulator of chromosome condensation (RCC1) and BTB (POZ) domain containing protein 2
Omim ID	603524
Gene Ontology	Hyperlink

Gene Summary

This gene encodes a member of the RCC1-related GEF family. The N-terminal half of the encoded amino acid sequence shows similarity to the regulator of chromosome condensation RCC1, which acts as a guanine nucleotide exchange factor (GEF) protein for the Ras-related GTPase Ran. [provided by RefSeq]

Other Designations

OTTHUMP00000018399|RCC1-like G exchanging factor RLG|chromosome condensation 1-like|regulator of chromosome condensation and BTB domain containing protein 2

Disease

- [Tobacco Use Disorder](#)