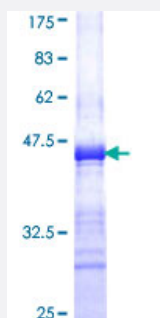


CHAD (Human) Recombinant Protein (Q01)

Catalog # H00001101-Q01

Size 25 ug, 10 ug

Applications



Specification

Product Description	Human CHAD partial ORF (NP_001258, 251 a.a. - 359 a.a.) recombinant protein with GST-tag at N-terminal.
Sequence	LDNTNLEKFSDGAFLGVTTLKHVHLENNRLNQLPSNFPFDSLETALALTNNPWKCTCQLRGLRRWL EAKASRPDATCASPAKFKGQHIRD TDAFRSCKFPTKRSKKAGRH
Host	Wheat Germ (in vitro)
Theoretical MW (kDa)	37.73
Interspecies Antigen Sequence	Mouse (91); Rat (91)
Preparation Method	in vitro wheat germ expression system
Purification	Glutathione Sepharose 4 Fast Flow
Quality Control Testing	12.5% SDS-PAGE Stained with Coomassie Blue.
Storage Buffer	50 mM Tris-HCl, 10 mM reduced Glutathione, pH=8.0 in the elution buffer.
Storage Instruction	Store at -80°C. Aliquot to avoid repeated freezing and thawing.
Note	Best use within three months from the date of receipt of this protein.

Applications

- Enzyme-linked Immunoabsorbent Assay
- Western Blot (Recombinant protein)
- Antibody Production
- Protein Array

Gene Info — CHAD

Entrez GeneID [1101](#)

GeneBank Accession# [NM_001267](#)

Protein Accession# [NP_001258](#)

Gene Name CHAD

Gene Alias SLRR4A

Gene Description chondroadherin

Omim ID [602178](#)

Gene Ontology [Hyperlink](#)

Gene Summary Chondroadherin is a cartilage matrix protein thought to mediate adhesion of isolated chondrocytes. The protein contains 11 leucine-rich repeats flanked by cysteine-rich regions. The chondroadherin messenger RNA is present in chondrocytes at all ages. [provided by RefSeq]

Other Designations chondroadherin proteoglycan

Pathway

- [ECM-receptor interaction](#)
- [Focal adhesion](#)