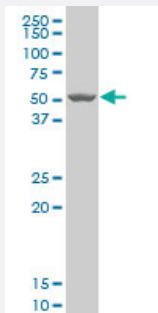


CHAD polyclonal antibody (A01)

Catalog # H00001101-A01

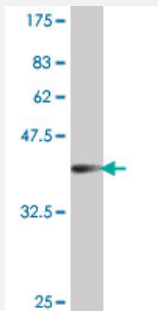
Size 50 uL

Applications



Western Blot (Cell lysate)

CHAD polyclonal antibody (A01), Lot # 060112JC01 Western Blot analysis of CHAD expression in SJCRH30 (Cat # L027V1).



Western Blot detection against Immunogen (38.1 KDa) .

Specification

Product Description	Mouse polyclonal antibody raised against a partial recombinant CHAD.
Immunogen	CHAD (NP_001258, 251 a.a. ~ 359 a.a) partial recombinant protein with GST tag.
Sequence	LDNTNLEKFSDGAFLGVTTLKHVHLENNRLNQLPSNFPFDSLETALTNPNWKCTCQLRGLRRWL EAKASRPDATCASP A KFKGQHIRD TDAFRSCKFPTKR SKKAGR H
Host	Mouse
Reactivity	Human
Interspecies Antigen Sequence	Mouse (91); Rat (91)

Quality Control Testing

Antibody Reactive Against Recombinant Protein.
Western Blot detection against Immunogen (38.1 KDa) .

Storage Buffer

50 % glycerol

Storage Instruction

Store at -20°C or lower. Aliquot to avoid repeated freezing and thawing.

Applications

- Western Blot (Cell lysate)

CHAD polyclonal antibody (A01), Lot # 060112JC01 Western Blot analysis of CHAD expression in SJCRH30 (Cat # L027V1).

[Protocol Download](#)

- Western Blot (Recombinant protein)

[Protocol Download](#)

- ELISA

Gene Info — CHAD

Entrez GeneID

[1101](#)

GeneBank Accession#

[NM_001267](#)

Protein Accession#

[NP_001258](#)

Gene Name

CHAD

Gene Alias

SLRR4A

Gene Description

chondroadherin

Omim ID

[602178](#)

Gene Ontology

[Hyperlink](#)

Gene Summary

Chondroadherin is a cartilage matrix protein thought to mediate adhesion of isolated chondrocytes. The protein contains 11 leucine-rich repeats flanked by cysteine-rich regions. The chondroadherin messenger RNA is present in chondrocytes at all ages. [provided by RefSeq]

Other Designations

chondroadherin proteoglycan

Pathway

- [ECM-receptor interaction](#)
- [Focal adhesion](#)