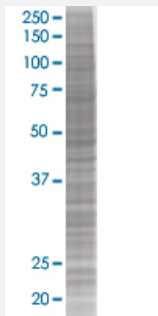


CGB 293T Cell Transient Overexpression Lysate(Denatured)

Catalog # H00001082-T01

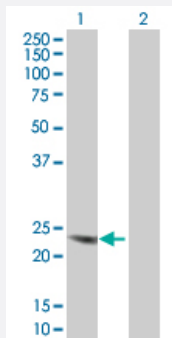
Size 100 uL

Applications



SDS-PAGE Gel

CGB transfected lysate



Western Blot

Lane 1: CGB transfected lysate (17.7 KDa).

Lane 2: Non-transfected lysate.

Specification

Transfected Cell Line 293T

Plasmid pCMV-CGB full-length

Host Human

Theoretical MW (kDa) 17.7

Quality Control Testing Transient overexpression cell lysate was tested with Anti-CGB antibody ([H00001082-B01](#)) by Western Blots.
 SDS-PAGE Gel
 CGB transfected lysate
 Western Blot
 Lane 1: CGB transfected lysate (17.7 KDa).
 Lane 2: Non-transfected lysate.

Storage Buffer	1X Sample Buffer (50 mM Tris-HCl, 2% SDS, 10% glycerol, 300 mM 2-mercaptoethanol, 0.01% Bromophenol blue)
Storage Instruction	Store at -80°C. Aliquot to avoid repeated freezing and thawing.

Applications

- Western Blot

Gene Info — CGB

Entrez GeneID	1082
GeneBank Accession#	BC041054
Protein Accession#	AAH41054
Gene Name	CGB
Gene Alias	CGB3, hCGB
Gene Description	chorionic gonadotropin, beta polypeptide
Omim ID	118860
Gene Ontology	Hyperlink
Gene Summary	<p>This gene is a member of the glycoprotein hormone beta chain family and encodes the beta 3 subunit of chorionic gonadotropin (CG). Glycoprotein hormones are heterodimers consisting of a common alpha subunit and an unique beta subunit which confers biological specificity. CG is produced by the trophoblastic cells of the placenta and stimulates the ovaries to synthesize the steroids that are essential for the maintenance of pregnancy. The beta subunit of CG is encoded by 6 genes which are arranged in tandem and inverted pairs on chromosome 19q13.3 and contiguous with the luteinizing hormone beta subunit gene. [provided by RefSeq]</p>
Other Designations	chorionic gonadotropin beta 3 subunit chorionic gonadotropin beta chain chorionic gonadotropin beta subunit

Disease

- [Abortion](#)
- [Genetic Predisposition to Disease](#)