

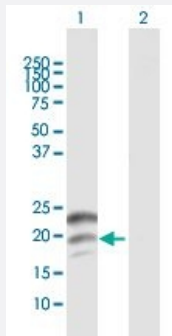
MaxPab®

CGB MaxPab rabbit polyclonal antibody (D01)

Catalog # H00001082-D01

Size 100 uL

Applications

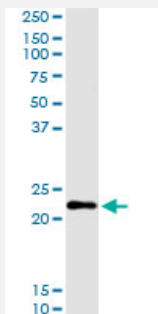


Western Blot (Transfected lysate)

Western Blot analysis of CGB expression in transfected 293T cell line ([H00001082-T01](#)) by CGB MaxPab polyclonal antibody.

Lane 1: CGB transfected lysate(17.7 KDa).

Lane 2: Non-transfected lysate.



Immunoprecipitation

Immunoprecipitation of CGB transfected lysate using anti-CGB MaxPab rabbit polyclonal antibody and Protein A Magnetic Bead, and immunoblotted with CGB purified MaxPab mouse polyclonal antibody (B01P) ([H00001082-B01P](#)).

Specification

| | |
|---------------------|--|
| Product Description | Rabbit polyclonal antibody raised against a full-length human CGB protein. |
| Immunogen | CGB (AAH41054.1, 1 a.a. ~ 165 a.a) full-length human protein. |
| Sequence | MEMFQGLLLLLLLSMGGTWASKEPLRPRCRPINATLAVEKEGCPVCITVNTTICAGYCPTMTRVLQ GVLPALPQVVCNYRDVRFESIRLPGCPRGVNPVVSYAVALSCQCALCRRSTTDCGGPKDHPLTC DDPRFQASSSSKAPPPSLPSPRLPGPSDTPILPQ |
| Host | Rabbit |
| Reactivity | Human |

| | |
|-------------------------|--|
| Quality Control Testing | Antibody reactive against mammalian transfected lysate. |
| Storage Buffer | No additive |
| Storage Instruction | Store at -20°C or lower. Aliquot to avoid repeated freezing and thawing. |

Applications

- Western Blot (Transfected lysate)

Western Blot analysis of CGB expression in transfected 293T cell line ([H00001082-T01](#)) by CGB MaxPab polyclonal antibody.

Lane 1: CGB transfected lysate(17.7 KDa).

Lane 2: Non-transfected lysate.

[Protocol Download](#)

- Immunoprecipitation

Immunoprecipitation of CGB transfected lysate using anti-CGB MaxPab rabbit polyclonal antibody and Protein A Magnetic Bead, and immunoblotted with CGB purified MaxPab mouse polyclonal antibody (B01P) ([H00001082-B01P](#)).

[Protocol Download](#)

Gene Info — CGB

| | |
|---------------------|--|
| Entrez GeneID | 1082 |
| GeneBank Accession# | BC041054 |
| Protein Accession# | AAH41054.1 |
| Gene Name | CGB |
| Gene Alias | CGB3, hCGB |
| Gene Description | chorionic gonadotropin, beta polypeptide |
| Omim ID | 118860 |
| Gene Ontology | Hyperlink |

Gene Summary

This gene is a member of the glycoprotein hormone beta chain family and encodes the beta 3 subunit of chorionic gonadotropin (CG). Glycoprotein hormones are heterodimers consisting of a common alpha subunit and an unique beta subunit which confers biological specificity. CG is produced by the trophoblastic cells of the placenta and stimulates the ovaries to synthesize the steroids that are essential for the maintenance of pregnancy. The beta subunit of CG is encoded by 6 genes which are arranged in tandem and inverted pairs on chromosome 19q13.3 and contiguous with the luteinizing hormone beta subunit gene. [provided by RefSeq]

Other Designations

chorionic gonadotropin beta 3 subunit|chorionic gonadotropin beta chain|chorionic gonadotropin beta subunit

Disease

- [Abortion](#)
- [Genetic Predisposition to Disease](#)