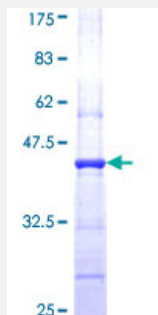


CFL2 (Human) Recombinant Protein (Q01)

Catalog # H00001073-Q01

Size 25 ug, 10 ug

Applications



Specification

Product Description	Human CFL2 partial ORF (NP_068733, 57 a.a. - 166 a.a.) recombinant protein with GST-tag at N-terminal.
Sequence	VGDIGDTVEDPYTSFVKLLPLNDCRYALYDATYETKESKKEDLVFIFWAPESAPLKSKMIYASSKD AIKKKFTGIKHEWQVNGLDIDKDRSTLGEKLGNNVVSLEGKPL
Host	Wheat Germ (in vitro)
Theoretical MW (kDa)	37.84
Interspecies Antigen Sequence	Mouse (99); Rat (99)
Preparation Method	in vitro wheat germ expression system
Purification	Glutathione Sepharose 4 Fast Flow
Quality Control Testing	12.5% SDS-PAGE Stained with Coomassie Blue.
Storage Buffer	50 mM Tris-HCl, 10 mM reduced Glutathione, pH=8.0 in the elution buffer.
Storage Instruction	Store at -80°C. Aliquot to avoid repeated freezing and thawing.
Note	Best use within three months from the date of receipt of this protein.

Applications

- Enzyme-linked Immunoabsorbent Assay
- Western Blot (Recombinant protein)
- Antibody Production
- Protein Array

Gene Info — CFL2

Entrez GeneID	1073
GeneBank Accession#	NM_021914
Protein Accession#	NP_068733
Gene Name	CFL2
Gene Alias	NEM7
Gene Description	cofilin 2 (muscle)
Omim ID	601443 610687
Gene Ontology	Hyperlink
Gene Summary	This gene encodes an intracellular protein that is involved in the regulation of actin-filament dynamics. This protein is a major component of intranuclear and cytoplasmic actin rods. It can bind G- and F-actin in a 1:1 ratio of cofilin to actin, and it reversibly controls actin polymerization and depolymerization in a pH-dependent manner. Mutations in this gene cause nemaline myopathy type 7, a form of congenital myopathy. Alternative splicing results in multiple transcript variants. [provided by RefSeq]
Other Designations	cofilin 2

Pathway

- [Axon guidance](#)
- [Fc gamma R-mediated phagocytosis](#)
- [Regulation of actin cytoskeleton](#)