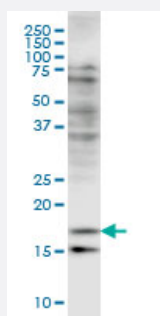


# CFL2 monoclonal antibody (M03), clone 6G9

Catalog # H00001073-M03

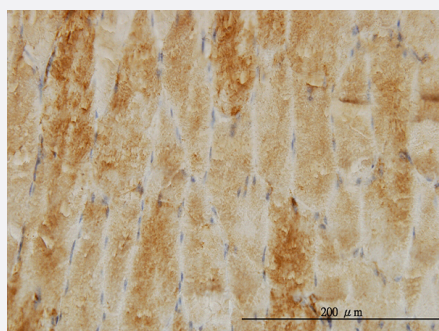
Size 100 ug

## Applications



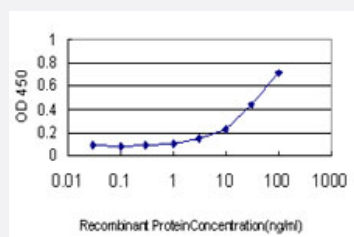
### Western Blot (Cell lysate)

CFL2 monoclonal antibody (M03), clone 6G9 Western Blot analysis of CFL2 expression in HeLa ( Cat # L013V1 ).



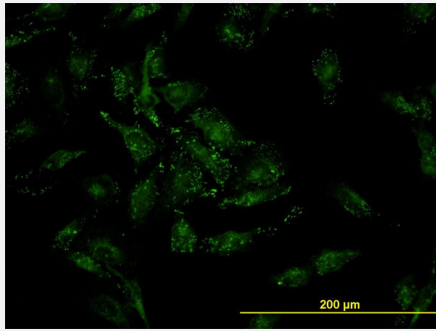
### Immunohistochemistry (Formalin/PFA-fixed paraffin-embedded sections)

Immunoperoxidase of monoclonal antibody to CFL2 on formalin-fixed paraffin-embedded human skeletal muscle. [antibody concentration 8 ug/ml]



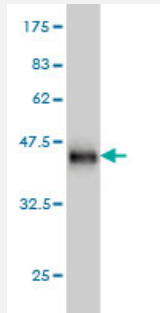
### Sandwich ELISA (Recombinant protein)

Detection limit for recombinant GST tagged CFL2 is approximately 1ng/ml as a capture antibody.



## Immunofluorescence

Immunofluorescence of monoclonal antibody to CFL2 on HeLa cell. [antibody concentration 10 ug/ml]



Western Blot detection against Immunogen (37.84 KDa) .

## Specification

<b>Product Description</b>	Mouse monoclonal antibody raised against a partial recombinant CFL2.
<b>Immunogen</b>	CFL2 (NP_068733, 57 a.a. ~ 166 a.a) partial recombinant protein with GST tag. MW of the GST tag alone is 26 KDa.
<b>Sequence</b>	VGDIGDTVEDPYTSFVKLLPLNDCRYALYDATYETKESKKEDLVFIFWAPESAPLKSKMIYASSKD AIKKKFTGIKHEWQVNGLDDIKDRSTLGEKLGGNVVVSLEGKPL
<b>Host</b>	Mouse
<b>Reactivity</b>	Human
<b>Interspecies Antigen Sequence</b>	Mouse (99); Rat (99)
<b>Isotype</b>	IgG1 Kappa
<b>Quality Control Testing</b>	Antibody Reactive Against Recombinant Protein. Western Blot detection against Immunogen (37.84 KDa) .
<b>Storage Buffer</b>	In 1x PBS, pH 7.4
<b>Storage Instruction</b>	Store at -20°C or lower. Aliquot to avoid repeated freezing and thawing.

## Applications

- Western Blot (Cell lysate)

CFL2 monoclonal antibody (M03), clone 6G9 Western Blot analysis of CFL2 expression in HeLa ( Cat # L013V1 ).

[Protocol Download](#)

- Western Blot (Recombinant protein)

[Protocol Download](#)

- Immunohistochemistry (Formalin/PFA-fixed paraffin-embedded sections)

Immunoperoxidase of monoclonal antibody to CFL2 on formalin-fixed paraffin-embedded human skeletal muscle. [antibody concentration 8 ug/ml]

[Protocol Download](#)

- Sandwich ELISA (Recombinant protein)

Detection limit for recombinant GST tagged CFL2 is approximately 1ng/ml as a capture antibody.

[Protocol Download](#)

- ELISA

- Immunofluorescence

Immunofluorescence of monoclonal antibody to CFL2 on HeLa cell. [antibody concentration 10 ug/ml]

## Gene Info — CFL2

Entrez GeneID	<a href="#">1073</a>
---------------	----------------------

GeneBank Accession#	<a href="#">NM_021914</a>
---------------------	---------------------------

Protein Accession#	<a href="#">NP_068733</a>
--------------------	---------------------------

Gene Name	CFL2
-----------	------

Gene Alias	NEM7
------------	------

Gene Description	cofilin 2 (muscle)
------------------	--------------------

Omim ID	<a href="#">601443</a> <a href="#">610687</a>
---------	---

## Gene Ontology

[Hyperlink](#)

## Gene Summary

This gene encodes an intracellular protein that is involved in the regulation of actin-filament dynamics. This protein is a major component of intranuclear and cytoplasmic actin rods. It can bind G- and F-actin in a 1:1 ratio of cofilin to actin, and it reversibly controls actin polymerization and depolymerization in a pH-dependent manner. Mutations in this gene cause nemaline myopathy type 7, a form of congenital myopathy. Alternative splicing results in multiple transcript variants. [provided by RefSeq]

## Other Designations

cofilin 2

## Pathway

- [Axon guidance](#)
- [Fc gamma R-mediated phagocytosis](#)
- [Regulation of actin cytoskeleton](#)