

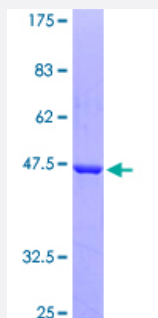
Full-Length

## CFL1 (Human) Recombinant Protein (P02)

Catalog # H00001072-P02

Size 25 ug, 10 ug

### Applications



### Specification

Product Description	Human CFL1 full-length ORF ( AAH18256, 1 a.a. - 166 a.a.) recombinant protein with GST-tag at N-terminal.
Sequence	MASGVAVSDGVKVFNDMKVRKSSTPEEVKKRKKAVLFRLEDKKNILEEGKEILVGDVGQTVD DPYATFVKMLPDKDCRYALYDATYETKESKKEDLVFIFWAPESAPLKSCKMIYASSKDAIKKKLTGIK HELQANCYEEVKDRCTLAEEELGGSAVISLEGKPL
Host	Wheat Germ (in vitro)
Theoretical MW (kDa)	44
Interspecies Antigen Sequence	Mouse (98); Rat (98)
Preparation Method	<a href="#">in vitro wheat germ expression system</a>
Purification	Glutathione Sepharose 4 Fast Flow
Quality Control Testing	12.5% SDS-PAGE Stained with Coomassie Blue.
Storage Buffer	50 mM Tris-HCl, 10 mM reduced Glutathione, pH=8.0 in the elution buffer.
Storage Instruction	Store at -80°C. Aliquot to avoid repeated freezing and thawing.

**Note**

Best use within three months from the date of receipt of this protein.

## Applications

- Enzyme-linked Immunoabsorbent Assay
- Western Blot (Recombinant protein)
- Antibody Production
- Protein Array

## Gene Info — CFL1

**Entrez GeneID** [1072](#)**GeneBank Accession#** [BC018256](#)**Protein Accession#** [AAH18256](#)**Gene Name** CFL1**Gene Alias** CFL**Gene Description** cofilin 1 (non-muscle)**Omim ID** [601442](#)**Gene Ontology** [Hyperlink](#)

**Gene Summary** Cofilin is a widely distributed intracellular actin-modulating protein that binds and depolymerizes filamentous F-actin and inhibits the polymerization of monomeric G-actin in a pH-dependent manner. It is involved in the translocation of actin-cofilin complex from cytoplasm to nucleus.[supplied by OMIM]

**Other Designations** -

## Pathway

- [Axon guidance](#)
- [Fc gamma R-mediated phagocytosis](#)

- [Regulation of actin cytoskeleton](#)

## Disease

- [Spinal Dysraphism](#)