

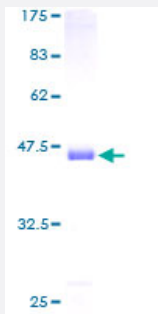
Full-Length

CFL1 (Human) Recombinant Protein (P01)

Catalog # H00001072-P01

Size 25 ug, 10 ug

Applications



Specification

Product Description	Human CFL1 full-length ORF (AAH11005, 1 a.a. - 166 a.a.) recombinant protein with GST-tag at N-terminal.
Sequence	MASGVAVSDGVKVFNDMKVRKSSTPEEVKKRKKAVLFCLSEDKKNILEEGKEILVGDVGQTVD DPYATFAKMLPDKDCRYALYDATYETKESKKEDLVFIFWAPESAPLKSMMYASSKDAIKKKLTGIK HELQANCYEGVKDRCTLAEKLGGSAVISLEGKPL
Host	Wheat Germ (in vitro)
Theoretical MW (kDa)	44
Interspecies Antigen Sequence	Mouse (98); Rat (98)
Preparation Method	in vitro wheat germ expression system
Purification	Glutathione Sepharose 4 Fast Flow
Quality Control Testing	12.5% SDS-PAGE Stained with Coomassie Blue.
Storage Buffer	50 mM Tris-HCl, 10 mM reduced Glutathione, pH=8.0 in the elution buffer.
Storage Instruction	Store at -80°C. Aliquot to avoid repeated freezing and thawing.

Note

Best use within three months from the date of receipt of this protein.

Applications

- Enzyme-linked Immunoabsorbent Assay
- Western Blot (Recombinant protein)
- Antibody Production
- Protein Array

Gene Info — CFL1

Entrez GeneID [1072](#)**GeneBank Accession#** [BC011005](#)**Protein Accession#** [AAH11005](#)**Gene Name** CFL1**Gene Alias** CFL**Gene Description** cofilin 1 (non-muscle)**Omim ID** [601442](#)**Gene Ontology** [Hyperlink](#)

Gene Summary Cofilin is a widely distributed intracellular actin-modulating protein that binds and depolymerizes filamentous F-actin and inhibits the polymerization of monomeric G-actin in a pH-dependent manner. It is involved in the translocation of actin-cofilin complex from cytoplasm to nucleus.[supplied by OMIM]

Other Designations -

Publication Reference

- [Detection of urine cofilin-1 from patients hospitalized in the intensive care unit using the metal-enhanced fluorescence technique.](#)

Chao CH, Chang YF, Chen HC, Lin LY, Yu PC, Chang YS, Lee YJ.

Sensors and Actuators B: Chemical 2010 Oct; 173:184.

Application: ELISA, Recombinant protein

Pathway

- [Axon guidance](#)
- [Fc gamma R-mediated phagocytosis](#)
- [Regulation of actin cytoskeleton](#)

Disease

- [Spinal Dysraphism](#)