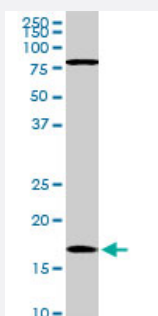


CFL1 monoclonal antibody (M04), clone 1A1

Catalog # H00001072-M04

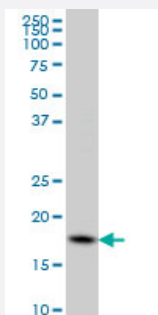
Size 100 ug

Applications



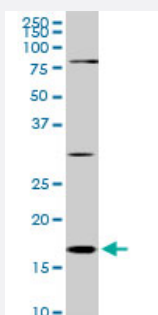
Western Blot (Cell lysate)

CFL1 monoclonal antibody (M04), clone 1A1. Western Blot analysis of CFL1 expression in NIH/3T3(Cat # L018V1).



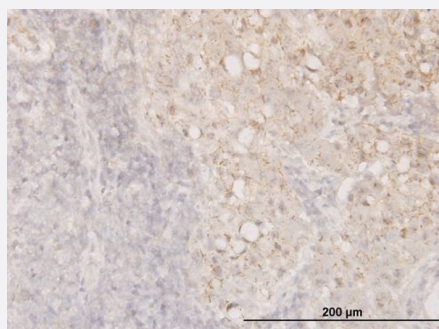
Western Blot (Cell lysate)

CFL1 monoclonal antibody (M04), clone 1A1 Western Blot analysis of CFL1 expression in HeLa (Cat # L013V1).



Western Blot (Cell lysate)

CFL1 monoclonal antibody (M04), clone 1A1. Western Blot analysis of CFL1 expression in Raw 264.7(Cat # L024V1).

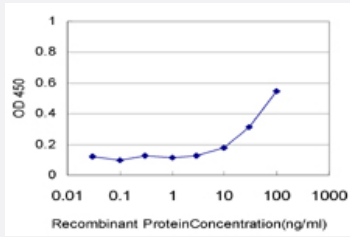


Immunohistochemistry (Formalin/PFA-fixed paraffin-embedded sections)

Immunoperoxidase of monoclonal antibody to CFL1 on formalin-fixed paraffin-embedded human breast cancer. [antibody concentration 1.5 ug/ml]

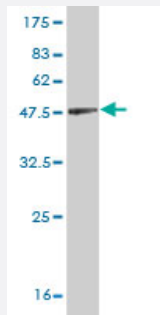
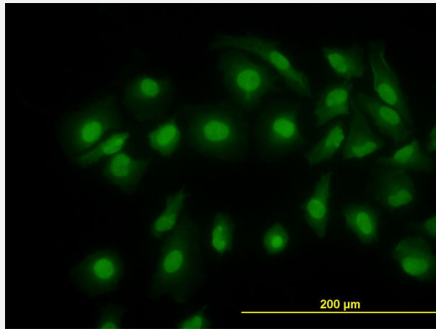
Sandwich ELISA (Recombinant protein)

Detection limit for recombinant GST tagged CFL1 is approximately 10ng/ml as a capture antibody.



Immunofluorescence

Immunofluorescence of monoclonal antibody to CFL1 on HeLa cell. [antibody concentration 10 ug/ml]



Western Blot detection against Immunogen (44 KDa) .

Specification

Product Description	Mouse monoclonal antibody raised against a full length recombinant CFL1.
Immunogen	CFL1 (AAH11005, 1 a.a. ~ 166 a.a) full-length recombinant protein with GST tag. MW of the GST tag alone is 26 KDa.
Sequence	MASGVAVSDGVIKVFNDMKVRKSSTPEEVKKRKKAVLFCLSDEKKNILEEGKEILVGDVGQTVD DPYATFAKMLPDKDCRYALYDATYETKESKKEDLVFIFWAPESAPLKSKMIYASSKDAIKKKLTGIK HELQANCYEGVKDRCTLAEKLGGSAVISLEGKPL
Host	Mouse
Reactivity	Human, Mouse
Interspecies Antigen Sequence	Mouse (98); Rat (98)

Isotype	IgG2a Kappa
Quality Control Testing	Antibody Reactive Against Recombinant Protein. Western Blot detection against Immunogen (44 KDa) .
Storage Buffer	In 1x PBS, pH 7.4
Storage Instruction	Store at -20°C or lower. Aliquot to avoid repeated freezing and thawing.

Applications

- Western Blot (Cell lysate)

CFL1 monoclonal antibody (M04), clone 1A1. Western Blot analysis of CFL1 expression in NIH/3T3(Cat # L018V1).

[Protocol Download](#)

- Western Blot (Cell lysate)

CFL1 monoclonal antibody (M04), clone 1A1 Western Blot analysis of CFL1 expression in HeLa (Cat # L013V1).

[Protocol Download](#)

- Western Blot (Cell lysate)

CFL1 monoclonal antibody (M04), clone 1A1. Western Blot analysis of CFL1 expression in Raw 264.7(Cat # L024V1).

[Protocol Download](#)

- Western Blot (Recombinant protein)

[Protocol Download](#)

- Immunohistochemistry (Formalin/PFA-fixed paraffin-embedded sections)

Immunoperoxidase of monoclonal antibody to CFL1 on formalin-fixed paraffin-embedded human breast cancer. [antibody concentration 1.5 ug/ml]

[Protocol Download](#)

- Sandwich ELISA (Recombinant protein)

Detection limit for recombinant GST tagged CFL1 is approximately 10ng/ml as a capture antibody.

[Protocol Download](#)

- ELISA

- Immunofluorescence

Immunofluorescence of monoclonal antibody to CFL1 on HeLa cell. [antibody concentration 10 ug/ml]

Gene Info — CFL1

Entrez GeneID [1072](#)

GeneBank Accession# [BC011005](#)

Protein Accession# [AAH11005](#)

Gene Name CFL1

Gene Alias CFL

Gene Description cofilin 1 (non-muscle)

Omim ID [601442](#)

Gene Ontology [Hyperlink](#)

Gene Summary Cofilin is a widely distributed intracellular actin-modulating protein that binds and depolymerizes filamentous F-actin and inhibits the polymerization of monomeric G-actin in a pH-dependent manner. It is involved in the translocation of actin-cofilin complex from cytoplasm to nucleus.[supplied by OMIM]

Other Designations -

Publication Reference

- [Determination of urine cofilin-1 level in acute kidney injury using a high-throughput localized surface plasmon-coupled fluorescence biosensor.](#)

Chang YF, Chao CH, Lin LY, Tsai CH, Chou C, Lee YJ.

Journal of Biomedical Optics 2014 Jan; 19(1):11004.

Application: WB-Ce, Human, HK-2 cells

- [Proteomic analysis of human Epithelial Lining Fluid by microfluidics-based nanoLC-MS/MS: a feasibility study.](#)

Franciosi L, Govorukhina N, Fusetti F, Poolman B, Lodewijk ME, Timens W, Postma D, ten Hacken N, Bischoff R.

Electrophoresis 2013 Sep; 34(18):2683.

Application: IHC, Human, Lung

- [Identification of phosphorylated serine-15 and -82 residues of HSPB1 in 5-fluorouracil-resistant colorectal cancer cells by proteomics.](#)

Sakai A, Otani M, Miyamoto A, Yoshida H, Furuya E, Tanigawa N.

Journal of Proteomics 2012 Jan; 75(3):806.

Application: WB-Ce, Human, DLD-1 cells

- [Overexpression of cofilin 1 can predict progression-free survival in patients with epithelial ovarian cancer receiving standard therapy.](#)

Nishimura S, Tsuda H, Kataoka F, Arai T, Nomura H, Chiyoda T, Susumu N, Nishio K, Aoki D.

Human Pathology 2011 Apr; 42(4):516.

Application: IHC, Human, Ovarian tumor

Pathway

- [Axon guidance](#)
- [Fc gamma R-mediated phagocytosis](#)
- [Regulation of actin cytoskeleton](#)

Disease

- [Spinal Dysraphism](#)