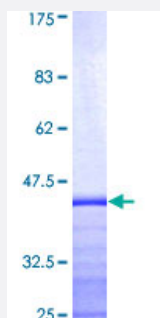


# CETN3 (Human) Recombinant Protein (Q01)

Catalog # H00001070-Q01

Size 25 ug, 10 ug

## Applications



## Specification

<b>Product Description</b>	Human CETN3 partial ORF ( AAH05383, 1 a.a. - 100 a.a.) recombinant protein with GST-tag at N-terminal.
<b>Sequence</b>	MSLALRSELVVDKTKRKKRRELSEEQKQEIKDAFELFDTDKDEAIDYHELKVAMRALGFDVKKAD VLKILKDYDREATGKITFEDFNEVVTDWILERDPH
<b>Host</b>	Wheat Germ (in vitro)
<b>Theoretical MW (kDa)</b>	36.63
<b>Preparation Method</b>	<a href="#">in vitro wheat germ expression system</a>
<b>Purification</b>	Glutathione Sepharose 4 Fast Flow
<b>Quality Control Testing</b>	12.5% SDS-PAGE Stained with Coomassie Blue.
<b>Storage Buffer</b>	50 mM Tris-HCl, 10 mM reduced Glutathione, pH=8.0 in the elution buffer.
<b>Storage Instruction</b>	Store at -80°C. Aliquot to avoid repeated freezing and thawing.
<b>Note</b>	Best use within three months from the date of receipt of this protein.

## Applications

- Enzyme-linked Immunoabsorbent Assay
- Western Blot (Recombinant protein)
- Antibody Production
- Protein Array

## Gene Info — CETN3

Entrez GeneID [1070](#)

GeneBank Accession# [BC005383](#)

Protein Accession# [AAH05383](#)

Gene Name CETN3

Gene Alias CEN3, MGC12502, MGC138245

Gene Description centrin, EF-hand protein, 3 (CDC31 homolog, yeast)

Omim ID [602907](#)

Gene Ontology [Hyperlink](#)

**Gene Summary** The protein encoded by this gene contains four EF-hand calcium binding domains, and is a member of the centrin protein family. Centrins are evolutionarily conserved proteins similar to the CDC 31 protein of *S. cerevisiae*. Yeast CDC31 is located at the centrosome of interphase and mitotic cells, where it plays a fundamental role in centrosome duplication and separation. Multiple forms of the proteins similar to the yeast centrin have been identified in human and other mammalian cells, some of which have been shown to be associated with centrosome fractions. This protein appears to be one of the most abundant centrins associated with centrosome, which suggests a similar function to its yeast counterpart. [provided by RefSeq]

**Other Designations** CDC31 yeast homolog|EF-hand superfamily member|centrin 3