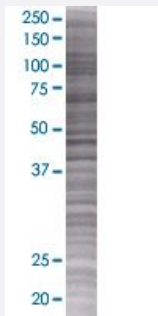


# CETN2 293T Cell Transient Overexpression Lysate(Denatured)

Catalog # H00001069-T01

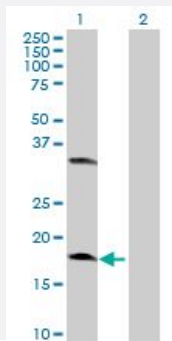
Size 100 uL

## Applications



### SDS-PAGE Gel

CETN2 transfected lysate.



### Western Blot

Lane 1: CETN2 transfected lysate ( 19.03 KDa)

Lane 2: Non-transfected lysate.

## Specification

Transfected Cell Line	293T
Plasmid	pCMV-CETN2 full-length
Host	Human
Theoretical MW (kDa)	19.03
Interspecies Antigen Sequence	Mouse (96); Rat (97)

**Quality Control Testing**

Transient overexpression cell lysate was tested with Anti-CETN2 antibody ([H00001069-B01](#)) by Western Blots.  
SDS-PAGE Gel  
CETN2 transfected lysate.  
Western Blot  
Lane 1: CETN2 transfected lysate ( 19.03 KDa)  
Lane 2: Non-transfected lysate.

**Storage Buffer**

1X Sample Buffer (50 mM Tris-HCl, 2% SDS, 10% glycerol, 300 mM 2-mercaptoethanol, 0.01% Bromophenol blue)

**Storage Instruction**

Store at -80°C. Aliquot to avoid repeated freezing and thawing.

## Applications

- Western Blot

## Gene Info — CETN2

**Entrez GeneID**[1069](#)**GeneBank Accession#**[NM\\_004344](#)**Protein Accession#**[NP\\_004335](#)**Gene Name**

CETN2

**Gene Alias**

CALT, CEN2

**Gene Description**

centrin, EF-hand protein, 2

**Omim ID**[300006](#)**Gene Ontology**[Hyperlink](#)**Gene Summary**

Caltractin belongs to a family of calcium-binding proteins and is a structural component of the centrosome. The high level of conservation from algae to humans and its association with the centrosome suggested that caltractin plays a fundamental role in the structure and function of the microtubule-organizing center, possibly required for the proper duplication and segregation of the centrosome. [provided by RefSeq]

**Other Designations**

OTTHUMP00000026058|caltractin|caltractin (20kD calcium-binding protein)

## Pathway

- [Nucleotide excision repair](#)