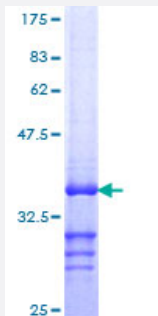


CETN2 (Human) Recombinant Protein (Q01)

Catalog # H00001069-Q01

Size 25 ug, 10 ug

Applications



Specification

Product Description	Human CETN2 partial ORF (NP_004335, 85 a.a. - 172 a.a.) recombinant protein with GST-tag at N-terminal.
Sequence	NFGDFLTVMQKMSEKDTKEEILKAFKLFDDDETGKISFKNLKRVAKELGENLTDEELQEMIDEAD RDGDGEVSEQEFLRIMKKTSLY
Host	Wheat Germ (in vitro)
Theoretical MW (kDa)	35.42
Interspecies Antigen Sequence	Mouse (98); Rat (98)
Preparation Method	in vitro wheat germ expression system
Purification	Glutathione Sepharose 4 Fast Flow
Quality Control Testing	12.5% SDS-PAGE Stained with Coomassie Blue.
Storage Buffer	50 mM Tris-HCl, 10 mM reduced Glutathione, pH=8.0 in the elution buffer.
Storage Instruction	Store at -80°C. Aliquot to avoid repeated freezing and thawing.
Note	Best use within three months from the date of receipt of this protein.

Applications

- Enzyme-linked Immunoabsorbent Assay
- Western Blot (Recombinant protein)
- Antibody Production
- Protein Array

Gene Info — CETN2

Entrez GeneID [1069](#)

GeneBank Accession# [NM_004344](#)

Protein Accession# [NP_004335](#)

Gene Name CETN2

Gene Alias CALT, CEN2

Gene Description centrin, EF-hand protein, 2

Omim ID [300006](#)

Gene Ontology [Hyperlink](#)

Gene Summary Caltractin belongs to a family of calcium-binding proteins and is a structural component of the centrosome. The high level of conservation from algae to humans and its association with the centrosome suggested that caltractin plays a fundamental role in the structure and function of the microtubule-organizing center, possibly required for the proper duplication and segregation of the centrosome. [provided by RefSeq]

Other Designations OTTHUMP00000026058|caltractin|caltractin (20kD calcium-binding protein)

Pathway

- [Nucleotide excision repair](#)