

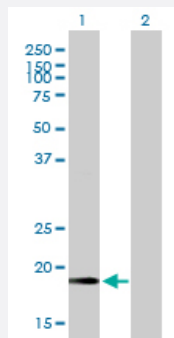
MaxPab®

# CETN2 purified MaxPab mouse polyclonal antibody (B01P)

Catalog # H00001069-B01P

Size 50 ug

## Applications



### Western Blot (Transfected lysate)

Western Blot analysis of CETN2 expression in transfected 293T cell line ([H00001069-T01](#)) by CETN2 MaxPab polyclonal antibody.

Lane 1: CETN2 transfected lysate(18.92 KDa).

Lane 2: Non-transfected lysate.

## Specification

Product Description	Mouse polyclonal antibody raised against a full-length human CETN2 protein.
Immunogen	CETN2 (NP_004335.1, 1 a.a. ~ 172 a.a) full-length human protein.
Sequence	MASNFKKANMASSSQKRMSPKPELTEEKQKQEIREFDLFDADGTGTIDVKELKVAMRALGFEP KKEEIKKMISEIDKEGTGKMNFGDFTVMTQKMSEKDTKEEILKAFKLFDDDETGKISFKNLKRVA KELGENLTDEELQEMIDEADRDGDGEVSEQEFLRIMKKTSLY
Host	Mouse
Reactivity	Human
Interspecies Antigen Sequence	Mouse (96); Rat (97)
Quality Control Testing	Antibody reactive against mammalian transfected lysate.
Storage Buffer	In 1x PBS, pH 7.4
Storage Instruction	Store at -20°C or lower. Aliquot to avoid repeated freezing and thawing.

## Applications

- Western Blot (Transfected lysate)

Western Blot analysis of CETN2 expression in transfected 293T cell line ([H00001069-T01](#)) by CETN2 MaxPab polyclonal antibody.

Lane 1: CETN2 transfected lysate(18.92 KDa).

Lane 2: Non-transfected lysate.

[Protocol Download](#)

## Gene Info — CETN2

Entrez GeneID [1069](#)

GeneBank Accession# [NM\\_004344](#)

Protein Accession# [NP\\_004335.1](#)

Gene Name CETN2

Gene Alias CALT, CEN2

Gene Description centrin, EF-hand protein, 2

Omim ID [300006](#)

Gene Ontology [Hyperlink](#)

**Gene Summary** Caltractin belongs to a family of calcium-binding proteins and is a structural component of the centrosome. The high level of conservation from algae to humans and its association with the centrosome suggested that caltractin plays a fundamental role in the structure and function of the microtubule-organizing center, possibly required for the proper duplication and segregation of the centrosome. [provided by RefSeq]

**Other Designations** OTTHUMP00000026058|caltractin|caltractin (20kD calcium-binding protein)

## Pathway

- [Nucleotide excision repair](#)