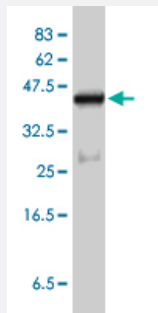


# CETN2 polyclonal antibody (A01)

Catalog # H00001069-A01

Size 50 uL

## Applications



Western Blot detection against Immunogen (45.03 KDa) .

## Specification

<b>Product Description</b>	Mouse polyclonal antibody raised against a full-length recombinant CETN2.
<b>Immunogen</b>	CETN2 (AAH05334, 1 a.a. ~ 172 a.a) full-length recombinant protein with GST tag.
<b>Sequence</b>	MASNFKKANMASSSQKRMSPKPELTEEKQEIREFDLFDADGTGTIDVKELKVAMRALGFEP KKEEIKKMISEIDKEGTGKMNFGDFLTVMTQKMSEKDTKEEILKAFKLFDDDETGKISFKNLKRVA KELGENLTDEELQEMIDEADRDGDGEVSEQEFLRIMKKTSLY
<b>Host</b>	Mouse
<b>Reactivity</b>	Human
<b>Interspecies Antigen Sequence</b>	Mouse (96); Rat (97)
<b>Quality Control Testing</b>	Antibody Reactive Against Recombinant Protein. Western Blot detection against Immunogen (45.03 KDa) .
<b>Storage Buffer</b>	50 % glycerol
<b>Storage Instruction</b>	Store at -20°C or lower. Aliquot to avoid repeated freezing and thawing.

## Applications

- Western Blot (Recombinant protein)

[Protocol Download](#)

- ELISA

## Gene Info — CETN2

Entrez GeneID	<a href="#">1069</a>
GeneBank Accession#	<a href="#">BC005334</a>
Protein Accession#	<a href="#">AAH05334</a>
Gene Name	CETN2
Gene Alias	CALT, CEN2
Gene Description	centrin, EF-hand protein, 2
Omim ID	<a href="#">300006</a>
Gene Ontology	<a href="#">Hyperlink</a>
Gene Summary	Caltractin belongs to a family of calcium-binding proteins and is a structural component of the centrosome. The high level of conservation from algae to humans and its association with the centrosome suggested that caltractin plays a fundamental role in the structure and function of the microtubule-organizing center, possibly required for the proper duplication and segregation of the centrosome. [provided by RefSeq]
Other Designations	OTTHUMP00000026058 caltractin caltractin (20kD calcium-binding protein)

## Pathway

- [Nucleotide excision repair](#)