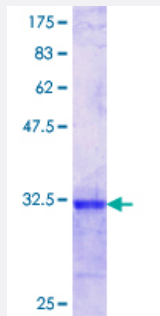


# CETN1 (Human) Recombinant Protein (Q02)

Catalog # H00001068-Q02

Size 25 ug, 10 ug

## Applications



## Specification

|                                |  |
|--------------------------------|--|
| <b>Product Description</b>     | Human CETN1 partial ORF ( AAH29515.1, 16 a.a. - 94 a.a.) recombinant protein with GST-tag at N-terminal. |
| <b>Sequence</b>                | KRKVAPKPELTEDQKQEVREAFDLFDVDGSGTIDAKELKVAMRALGFEP RKEEMKKMISEVDRE<br>GTGKISFNDFLAVMT                     |
| <b>Host</b>                    | Wheat Germ (in vitro)  |
| <b>Theoretical MW (kDa)</b>    | 34.32  |
| <b>Preparation Method</b>      | <a href="#">in vitro wheat germ expression system</a>  |
| <b>Purification</b>            | Glutathione Sepharose 4 Fast Flow  |
| <b>Quality Control Testing</b> | 12.5% SDS-PAGE Stained with Coomassie Blue.  |
| <b>Storage Buffer</b>          | 50 mM Tris-HCl, 10 mM reduced Glutathione, pH=8.0 in the elution buffer.                                 |
| <b>Storage Instruction</b>     | Store at -80°C. Aliquot to avoid repeated freezing and thawing.  |
| <b>Note</b>                    | Best use within three months from the date of receipt of this protein.                                   |

## Applications

- Enzyme-linked Immunoabsorbent Assay
- Western Blot (Recombinant protein)
- Antibody Production
- Protein Array

## Gene Info — CETN1

**Entrez GeneID** [1068](#)

**GeneBank Accession#** [BC029515](#)

**Protein Accession#** [AAH29515.1](#)

**Gene Name** CETN1

**Gene Alias** CEN1, CETN

**Gene Description** centrin, EF-hand protein, 1

**Omim ID** [603187](#)

**Gene Ontology** [Hyperlink](#)

**Gene Summary** The protein encoded by this gene plays important roles in the determination of centrosome position and segregation, and in the process of microtubule severing. This encoded protein is localized to the centrosome of interphase cells, and redistributes to the region of the spindle poles during mitosis, reflecting the dynamic behavior of the centrosome during the cell cycle. [provided by RefSeq]

**Other Designations** Centrin-1|EF-hand protein|calcium binding protein|centrin 1