

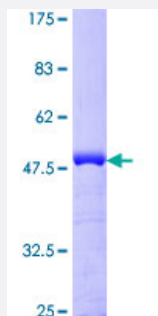
Full-Length

CETN1 (Human) Recombinant Protein (P01)

Catalog # H00001068-P01

Size 25 ug, 10 ug

Applications



Specification

Product Description	Human CETN1 full-length ORF (NP_004057.1, 1 a.a. - 172 a.a.) recombinant protein with GST-tag at N-terminal.
Sequence	MASGFKKPSAASTGQKRKVAPKPELTEDQKQEVREAFDLFDVDGSGTIDAKELKVAMRALGFE PRKEEMKKMISEVDREGTGKISFNDFLAVMTQKMSEKDTKEEILKAFRLFDDDETGKISFKNLKR V ANELGENLTDEELQEMIDEADRDGDGEVNEEFLRMKKTSLY
Host	Wheat Germ (in vitro)
Theoretical MW (kDa)	46
Preparation Method	in vitro wheat germ expression system
Purification	Glutathione Sepharose 4 Fast Flow
Quality Control Testing	12.5% SDS-PAGE Stained with Coomassie Blue.
Storage Buffer	50 mM Tris-HCl, 10 mM reduced Glutathione, pH=8.0 in the elution buffer.
Storage Instruction	Store at -80°C. Aliquot to avoid repeated freezing and thawing.
Note	Best use within three months from the date of receipt of this protein.

Applications

- Enzyme-linked Immunoabsorbent Assay
- Western Blot (Recombinant protein)
- Antibody Production
- Protein Array

Gene Info — CETN1

Entrez GeneID [1068](#)

GeneBank Accession# [NM_004066.1](#)

Protein Accession# [NP_004057.1](#)

Gene Name CETN1

Gene Alias CEN1, CETN

Gene Description centrin, EF-hand protein, 1

Omim ID [603187](#)

Gene Ontology [Hyperlink](#)

Gene Summary The protein encoded by this gene plays important roles in the determination of centrosome position and segregation, and in the process of microtubule severing. This encoded protein is localized to the centrosome of interphase cells, and redistributes to the region of the spindle poles during mitosis, reflecting the dynamic behavior of the centrosome during the cell cycle. [provided by RefSeq]

Other Designations Centrin-1|EF-hand protein|calcium binding protein|centrin 1