

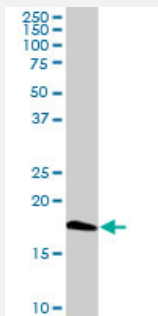
MaxPab®

## CETN1 MaxPab rabbit polyclonal antibody (D01)

Catalog # H00001068-D01

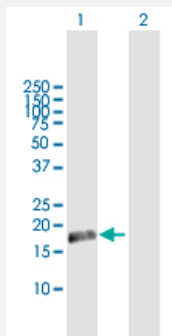
Size 100 uL

### Applications



#### Western Blot (Tissue lysate)

CETN1 MaxPab rabbit polyclonal antibody. Western Blot analysis of CETN1 expression in mouse kidney.

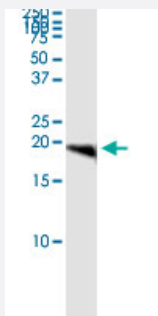


#### Western Blot (Transfected lysate)

Western Blot analysis of CETN1 expression in transfected 293T cell line ([H00001068-T01](#)) by CETN1 MaxPab polyclonal antibody.

Lane 1: CETN1 transfected lysate(19.6 kDa).

Lane 2: Non-transfected lysate.



#### Immunoprecipitation

Immunoprecipitation of CETN1 transfected lysate using anti-CETN1 MaxPab rabbit polyclonal antibody and Protein A Magnetic Bead, and immunoblotted with CETN1 purified MaxPab mouse polyclonal antibody (B01P) ([H00001068-B01P](#)).

### Specification

#### Product Description

Rabbit polyclonal antibody raised against a full-length human CETN1 protein.

Immunogen	CETN1 (NP_004057.1, 1 a.a. ~ 172 a.a) full-length human protein.
Sequence	MASGFKKPSAASTGQKRKVAPKPELTEDQKQEVREAFDLFDVDGSGTIDAKELKVAMRALGFE PRKEEMKKMISEVDREGTGKISFNDFLAVMTQKMSEKDTKEEILKAFRLFDDDETGKISFKNLKRV ANELGENLTDEELQEMIDEADRDGDGEVNEEEEFLRMKKTSLY
Host	Rabbit
Reactivity	Human, Mouse
Quality Control Testing	Antibody reactive against mammalian transfected lysate.
Storage Buffer	No additive
Storage Instruction	Store at -20°C or lower. Aliquot to avoid repeated freezing and thawing.

## Applications

- Western Blot (Tissue lysate)

CETN1 MaxPab rabbit polyclonal antibody. Western Blot analysis of CETN1 expression in mouse kidney.

[Protocol Download](#)

- Western Blot (Transfected lysate)

Western Blot analysis of CETN1 expression in transfected 293T cell line ([H00001068-T01](#)) by CETN1 MaxPab polyclonal antibody.

Lane 1: CETN1 transfected lysate(19.6 KDa).

Lane 2: Non-transfected lysate.

[Protocol Download](#)

- Immunoprecipitation

Immunoprecipitation of CETN1 transfected lysate using anti-CETN1 MaxPab rabbit polyclonal antibody and Protein A Magnetic Bead, and immunoblotted with CETN1 purified MaxPab mouse polyclonal antibody (B01P) ([H00001068-B01P](#)).

[Protocol Download](#)

## Gene Info — CETN1

Entrez GeneID	<a href="#">1068</a>
GeneBank Accession#	<a href="#">NM_004066</a>
Protein Accession#	<a href="#">NP_004057.1</a>

Gene Name	CETN1
Gene Alias	CEN1, CETN
Gene Description	centrin, EF-hand protein, 1
Omim ID	<a href="#">603187</a>
Gene Ontology	<a href="#">Hyperlink</a>
Gene Summary	<p>The protein encoded by this gene plays important roles in the determination of centrosome position and segregation, and in the process of microtubule severing. This encoded protein is localized to the centrosome of interphase cells, and redistributes to the region of the spindle poles during mitosis, reflecting the dynamic behavior of the centrosome during the cell cycle. [provided by RefSeq]</p>
Other Designations	Centrin-1 EF-hand protein calcium binding protein centrin 1