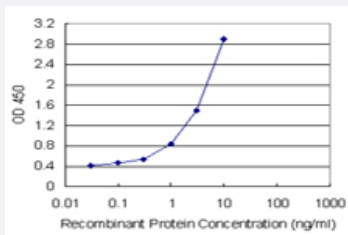


CETN1 (Human) Matched Antibody Pair

Catalog # H00001068-AP21

Size 1 Set

Applications



Sandwich ELISA detection sensitivity ranging from 0.03 ng/ml to 100 ng/ml.

Specification

Product Description	This antibody pair set comes with a matched antibody pair to detect and quantify the protein level of human CETN1.
Reactivity	Human
Quality Control Testing	Standard curve using recombinant protein (H00001068-P01) as an analyte. Sandwich ELISA detection sensitivity ranging from 0.03 ng/ml to 100 ng/ml.
Supplied Product	Antibody pair set content: 1. Capture antibody: rabbit MaxPab® affinity purified polyclonal anti-CETN1 (100 ug) 2. Detection antibody: mouse purified polyclonal anti-CETN1 (20 ug) *Reagents are sufficient for at least 1-2 x 96 well plates using recommended protocols.
Storage Instruction	Store reagents of the antibody pair set at -20°C or lower. Please aliquot to avoid repeated freeze thaw cycle. Reagents should be returned to -20°C storage immediately after use.

Applications

- ELISA Pair (Recombinant protein)

[Protocol Download](#)

Gene Info — CETN1

Entrez GeneID [1068](#)**Gene Name** CETN1**Gene Alias** CEN1, CETN**Gene Description** centrin, EF-hand protein, 1**Omim ID** [603187](#)**Gene Ontology** [Hyperlink](#)

Gene Summary The protein encoded by this gene plays important roles in the determination of centrosome position and segregation, and in the process of microtubule severing. This encoded protein is localized to the centrosome of interphase cells, and redistributes to the region of the spindle poles during mitosis, reflecting the dynamic behavior of the centrosome during the cell cycle. [provided by RefSeq]

Other Designations Centrin-1|EF-hand protein|calcium binding protein|centrin 1