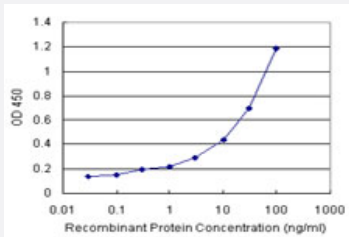


# CEBPG (Human) Matched Antibody Pair

Catalog # H00001054-AP21

Size 1 Set

## Applications



Sandwich ELISA detection sensitivity ranging from 0.3 ng/ml to 100 ng/ml.

## Specification

<b>Product Description</b>	This antibody pair set comes with a matched antibody pair to detect and quantify the protein level of human CEBPG.
<b>Reactivity</b>	Human
<b>Interspecies Antigen Sequence</b>	Mouse (91%); Rat (92%)
<b>Quality Control Testing</b>	Standard curve using recombinant protein ( H00001054-P01 ) as an analyte. Sandwich ELISA detection sensitivity ranging from 0.3 ng/ml to 100 ng/ml.
<b>Supplied Product</b>	Antibody pair set content: 1. Capture antibody: rabbit MaxPab® affinity purified polyclonal anti-CEBPG (100 ug) 2. Detection antibody: mouse polyclonal anti-CEBPG (40 ul) *Reagents are sufficient for at least 3-5 x 96 well plates using recommended protocols.
<b>Storage Instruction</b>	Store reagents of the antibody pair set at -20°C or lower. Please aliquot to avoid repeated freeze thaw cycle. Reagents should be returned to -20°C storage immediately after use.

## Applications

- ELISA Pair (Recombinant protein)

[Protocol Download](#)

## Gene Info — CEBPG

**Entrez GeneID** [1054](#)

**Gene Name** CEBPG

**Gene Alias** GPE1BP, IG/EBP-1

**Gene Description** CCAAT/enhancer binding protein (C/EBP), gamma

**Omim ID** [138972](#)

**Gene Ontology** [Hyperlink](#)

**Gene Summary** The C/EBP family of transcription factors regulates viral and cellular CCAAT/enhancer element-mediated transcription. C/EBP proteins contain the bZIP region, which is characterized by two motifs in the C-terminal half of the protein: a basic region involved in DNA binding and a leucine zipper motif involved in dimerization. The C/EBP family consists of several related proteins, C/EBP alpha, C/EBP beta, C/EBP gamma, and C/EBP delta, that form homodimers and that form heterodimers with each other. CCAAT/enhancer binding protein gamma may cooperate with Fos to bind PRE-I enhancer elements. [provided by RefSeq]

**Other Designations** CCAAT/enhancer binding protein gamma