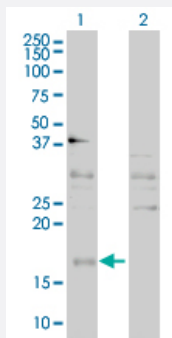


CEBPG polyclonal antibody (A01)

Catalog # H00001054-A01

Size 50 uL

Applications

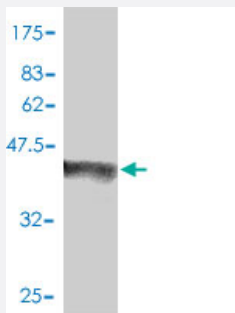


Western Blot (Transfected lysate)

Western Blot analysis of CEBPG expression in transfected 293T cell line by CEBPG polyclonal antibody (A01).

Lane1:CEBPG transfected lysate(16 KDa).

Lane2:Non-transfected lysate.



Western Blot detection against Immunogen (42.61 KDa) .

Specification

Product Description	Mouse polyclonal antibody raised against a full-length recombinant CEBPG.
Immunogen	CEBPG (AAH13128, 1 a.a. ~ 150 a.a) full-length recombinant protein with GST tag.
Sequence	MSKISQQNSTPGVNGISVIHTQAHASGLQQVPQLVPAGPGGGGKAVAPSKQSKKSSPMDRNSD EYRQRRERNMMAVKKSRLKSKQKAQDTLQRVNQLKEENERLEAKIKLLTKELSVLKDLFLEHAHN LADNVQSISTENTTADGDNAGQ
Host	Mouse
Reactivity	Human

Interspecies Antigen Sequence	Mouse (91); Rat (93)
Quality Control Testing	Antibody Reactive Against Recombinant Protein. Western Blot detection against Immunogen (42.61 KDa) .
Storage Buffer	50 % glycerol
Storage Instruction	Store at -20°C or lower. Aliquot to avoid repeated freezing and thawing.

Applications

- Western Blot (Transfected lysate)

Western Blot analysis of CEBPG expression in transfected 293T cell line by CEBPG polyclonal antibody (A01).

Lane1:CEBPG transfected lysate(16 KDa).

Lane2:Non-transfected lysate.

[Protocol Download](#)

- Western Blot (Recombinant protein)

[Protocol Download](#)

- ELISA

Gene Info — CEBPG

Entrez GeneID	1054
GeneBank Accession#	BC013128
Protein Accession#	AAH13128
Gene Name	CEBPG
Gene Alias	GPE1BP, IG/EBP-1
Gene Description	CCAAT/enhancer binding protein (C/EBP), gamma
Omim ID	138972
Gene Ontology	Hyperlink

Gene Summary

The C/EBP family of transcription factors regulates viral and cellular CCAAT/enhancer element-mediated transcription. C/EBP proteins contain the bZIP region, which is characterized by two motifs in the C-terminal half of the protein: a basic region involved in DNA binding and a leucine zipper motif involved in dimerization. The C/EBP family consists of several related proteins, C/EBP alpha, C/EBP beta, C/EBP gamma, and C/EBP delta, that form homodimers and that form heterodimers with each other. CCAAT/enhancer binding protein gamma may cooperate with Fos to bind PRE-I enhancer elements. [provided by RefSeq]

Other Designations

CCAAT/enhancer binding protein gamma