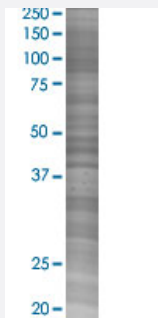


CEBPE 293T Cell Transient Overexpression Lysate(Denatured)

Catalog # H00001053-T02

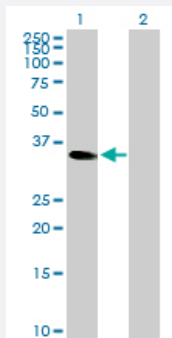
Size 100 uL

Applications



SDS-PAGE Gel

CEBPE transfected lysate.



Western Blot

Lane 1: CEBPE transfected lysate (30.60 KDa)

Lane 2: Non-transfected lysate.

Specification

Transfected Cell Line 293T

Plasmid pCMV-CEBPE full-length

Host Human

Theoretical MW (kDa) 30.6

Quality Control Testing Transient overexpression cell lysate was tested with Anti-CEBPE antibody ([H00001053-D01P](#)) by Western Blots.
SDS-PAGE Gel
CEBPE transfected lysate.
Western Blot
Lane 1: CEBPE transfected lysate (30.60 KDa)
Lane 2: Non-transfected lysate.

Storage Buffer

1X Sample Buffer (50 mM Tris-HCl, 2% SDS, 10% glycerol, 300 mM 2-mercaptoethanol, 0.01% Bromophenol blue)

Storage Instruction

Store at -80°C. Aliquot to avoid repeated freezing and thawing.

Applications

- Western Blot

Gene Info — CEBPE

Entrez GeneID[1053](#)**GeneBank Accession#**[NM_001805.2](#)**Protein Accession#**[NP_001796.2](#)**Gene Name**

CEBPE

Gene Alias

C/EBP-epsilon, CRP1

Gene Description

CCAAT/enhancer binding protein (C/EBP), epsilon

Omim ID[245480 600749](#)**Gene Ontology**[Hyperlink](#)**Gene Summary**

The protein encoded by this gene is a bZIP transcription factor which can bind as a homodimer to certain DNA regulatory regions. It can also form heterodimers with the related protein CEBP-delta. The encoded protein may be essential for terminal differentiation and functional maturation of committed granulocyte progenitor cells. Mutations in this gene have been associated with Specific Granule Deficiency, a rare congenital disorder. Multiple variants of this gene have been described, but the full-length nature of only one has been determined. [provided by RefSeq]

Other Designations

CCAAT/enhancer binding protein epsilon

Disease

- [Genetic Predisposition to Disease](#)
- [Precursor B-Cell Lymphoblastic Leukemia-Lymphoma](#)