

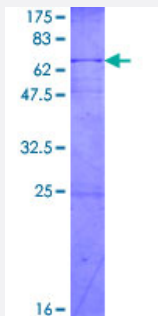
Full-Length

## CEBPE (Human) Recombinant Protein (P01)

Catalog # H00001053-P01

Size 25 ug, 10 ug

### Applications



### Specification

#### Product Description

Human CEBPE full-length ORF ( AAH35797.2, 1 a.a. - 281 a.a.) recombinant protein with GST-tag at N-terminal.

#### Sequence

MSHGTYECEPRGGQQPLEFSGGRAGPGELGDMCEHEASIDLSAYIESGEEQLLSDLFAVKPAP  
EARGLKGPGTAPAFHYLPDPDPFAYPPHTFGPDRKALGPGIYSSPGSYDPRAVAVKEEPRGPE  
GSRAASRGSYNPLQYQVAHCGQTAMHLPPTLAAPGQPLRVLKAPLATAAPPCSPLLKAPSPAGP  
LHKGKKAVNKDSLEYRLRRERNNIAVRKSRDKAKRRILETQQKVLEYMAENERLRSRVEQLTQEL  
DTLRNLFRRQIPEAANLIKGVGGCS

#### Host

Wheat Germ (in vitro)

#### Theoretical MW (kDa)

56.65

#### Preparation Method

[in vitro wheat germ expression system](#)

#### Purification

Glutathione Sepharose 4 Fast Flow

#### Quality Control Testing

12.5% SDS-PAGE Stained with Coomassie Blue.

#### Storage Buffer

50 mM Tris-HCl, 10 mM reduced Glutathione, pH=8.0 in the elution buffer.

#### Storage Instruction

Store at -80°C. Aliquot to avoid repeated freezing and thawing.

#### Note

Best use within three months from the date of receipt of this protein.

## Applications

- Enzyme-linked Immunoabsorbent Assay
- Western Blot (Recombinant protein)
- Antibody Production
- Protein Array

## Gene Info — CEBPE

Entrez GeneID [1053](#)

GeneBank Accession# [BC035797](#)

Protein Accession# [AAH35797.2](#)

Gene Name CEBPE

Gene Alias C/EBP-epsilon, CRP1

Gene Description CCAAT/enhancer binding protein (C/EBP), epsilon

Omim ID [245480 600749](#)

Gene Ontology [Hyperlink](#)

**Gene Summary** The protein encoded by this gene is a bZIP transcription factor which can bind as a homodimer to certain DNA regulatory regions. It can also form heterodimers with the related protein CEBP-delta . The encoded protein may be essential for terminal differentiation and functional maturation of committed granulocyte progenitor cells. Mutations in this gene have been associated with Specific Granule Deficiency, a rare congenital disorder. Multiple variants of this gene have been described , but the full-length nature of only one has been determined. [provided by RefSeq

**Other Designations** CCAAT/enhancer binding protein epsilon

## Disease

- [Genetic Predisposition to Disease](#)
- [Precursor B-Cell Lymphoblastic Leukemia-Lymphoma](#)