

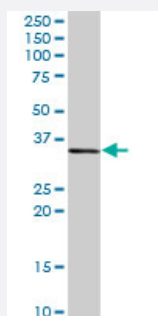
MaxPab®

# CEBPE purified MaxPab rabbit polyclonal antibody (D01P)

Catalog # H00001053-D01P

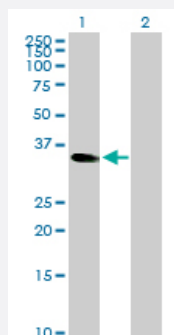
Size 100 ug

## Applications



### Western Blot (Tissue lysate)

CEBPE MaxPab rabbit polyclonal antibody. Western Blot analysis of CEBPE expression in mouse liver.



### Western Blot (Transfected lysate)

Western Blot analysis of CEBPE expression in transfected 293T cell line by CEBPE MaxPab rabbit polyclonal antibody.

Lane 1: CEBPE transfected lysate(30.60 KDa).

Lane 2: Non-transfected lysate.

## Specification

### Product Description

Rabbit polyclonal antibody raised against a full-length human CEBPE protein.

### Immunogen

CEBPE (NP\_001796.2, 1 a.a. ~ 281 a.a) full-length human protein.

### Sequence

MSHGTYECEPRGGQQPLEFSGGRAGPGELGDMCEHEASIDLSAYIESGEEQLLSDLFAVKPAP  
EARGLKGPGTAFPHYLPPDPRPFAYPPHTFGPDRKALGPGIYSSPGSYDPRAVAVKEEPRGPE  
GSRAASRGSYNPLQYQVAHCGQTAMHLPTLAAPGQPLRVLKAPLATAAPPCSPLLKAPSPAGP  
LHKGKKAVNKDSLEYRLRRERNNIIVRKS RDKAKRRILETQQKVLEYMAENERLRSRVEQLTQEL  
DTLRNLF RQIPEAANLIKGVGGCS

### Host

Rabbit

Reactivity	Human, Mouse
Quality Control Testing	Antibody reactive against mammalian transfected lysate.
Storage Buffer	In 1x PBS, pH 7.4
Storage Instruction	Store at -20°C or lower. Aliquot to avoid repeated freezing and thawing.

## Applications

- Western Blot (Tissue lysate)

CEBPE MaxPab rabbit polyclonal antibody. Western Blot analysis of CEBPE expression in mouse liver.

[Protocol Download](#)

- Western Blot (Transfected lysate)

Western Blot analysis of CEBPE expression in transfected 293T cell line by CEBPE MaxPab rabbit polyclonal antibody.

Lane 1: CEBPE transfected lysate(30.60 KDa).

Lane 2: Non-transfected lysate.

[Protocol Download](#)

## Gene Info — CEBPE

Entrez GeneID	<a href="#">1053</a>
GeneBank Accession#	<a href="#">NM_001805.2</a>
Protein Accession#	<a href="#">NP_001796.2</a>
Gene Name	CEBPE
Gene Alias	C/EBP-epsilon, CRP1
Gene Description	CCAAT/enhancer binding protein (C/EBP), epsilon
Omim ID	<a href="#">245480 600749</a>
Gene Ontology	<a href="#">Hyperlink</a>

**Gene Summary**

The protein encoded by this gene is a bZIP transcription factor which can bind as a homodimer to certain DNA regulatory regions. It can also form heterodimers with the related protein CEBP-delta . The encoded protein may be essential for terminal differentiation and functional maturation of committed granulocyte progenitor cells. Mutations in this gene have been associated with Specific Granule Deficiency, a rare congenital disorder. Multiple variants of this gene have been described , but the full-length nature of only one has been determined. [provided by RefSeq

**Other Designations**

CCAAT/enhancer binding protein epsilon

**Disease**

- [Genetic Predisposition to Disease](#)
- [Precursor B-Cell Lymphoblastic Leukemia-Lymphoma](#)