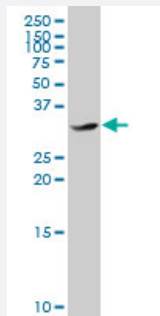


CEBPE polyclonal antibody (A01)

Catalog # H00001053-A01

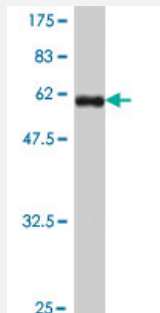
Size 50 uL

Applications



Western Blot (Cell lysate)

CEBPE polyclonal antibody (A01), Lot # 050921JC01. Western Blot analysis of CEBPE expression in Daoy.



Western Blot detection against Immunogen (57.02 KDa) .

Specification

Product Description	Mouse polyclonal antibody raised against a full-length recombinant CEBPE.
Immunogen	CEBPE (AAH35797.2, 1 a.a. ~ 281 a.a) full-length recombinant protein with GST tag.
Sequence	MSHGTYECEPRGGQQPLEFSGGRAGPGELGDMCEHEASIDLSAYIESGEEQLLSDLFAVKPAP EARGLKGPOTPAPFHYLPDPDPFAYPPHTFGPDRKALGPGIYSSPGSYDPRAVAVKEEPRGPE GSRAASRGSYNPLQYQVAHCGQTAMHLPPTLAAPGQPLRVLKAPLATAAPPCSPLLKAPSPAGP LHKGKKAVNKDSLEYRLRRERNNAVRKSRDKAKRRILETQQKVLEYMAENERLRSRVEQLTQEL DTLRNLFRQIPEAANLIKGVGGCS
Host	Mouse
Reactivity	Human

Quality Control Testing

Antibody Reactive Against Recombinant Protein.
Western Blot detection against Immunogen (57.02 KDa) .

Storage Buffer

50 % glycerol

Storage Instruction

Store at -20°C or lower. Aliquot to avoid repeated freezing and thawing.

Applications

- Western Blot (Cell lysate)

CEBPE polyclonal antibody (A01), Lot # 050921JC01. Western Blot analysis of CEBPE expression in Daoy.

[Protocol Download](#)

- Western Blot (Recombinant protein)

[Protocol Download](#)

- ELISA

Gene Info — CEBPE

Entrez GeneID

[1053](#)

GeneBank Accession#

[BC035797](#)

Protein Accession#

[AAH35797.2](#)

Gene Name

CEBPE

Gene Alias

C/EBP-epsilon, CRP1

Gene Description

CCAAT/enhancer binding protein (C/EBP), epsilon

Omim ID

[245480](#) [600749](#)

Gene Ontology

[Hyperlink](#)

Gene Summary

The protein encoded by this gene is a bZIP transcription factor which can bind as a homodimer to certain DNA regulatory regions. It can also form heterodimers with the related protein CEBP-delta . The encoded protein may be essential for terminal differentiation and functional maturation of committed granulocyte progenitor cells. Mutations in this gene have been associated with Specific Granule Deficiency, a rare congenital disorder. Multiple variants of this gene have been described , but the full-length nature of only one has been determined. [provided by RefSeq

Other DesignationsCCAAT/enhancer binding protein epsilon

Disease

- [Genetic Predisposition to Disease](#)
- [Precursor B-Cell Lymphoblastic Leukemia-Lymphoma](#)