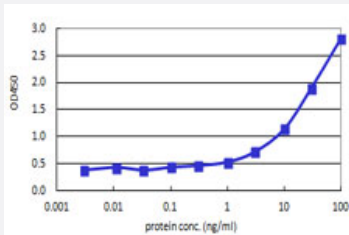


CDX4 (Human) Matched Antibody Pair

Catalog # H00001046-AP41 Size 1 Set

Applications



Sandwich ELISA detection sensitivity ranging from 0.3 ng/ml to 100 ng/ml.

Specification

Product Description	This antibody pair set comes with a matched antibody pair to detect and quantify the protein level of human CDX4.
Reactivity	Human
Quality Control Testing	Standard curve using recombinant protein (H00001046-Q02) as an analyte. Sandwich ELISA detection sensitivity ranging from 0.3 ng/ml to 100 ng/ml.
Supplied Product	Antibody pair set content: 1. Capture antibody: mouse monoclonal anti-CDX4, IgG2a Kappa (100 ug) 2. Detection antibody: biotinylated mouse monoclonal anti-CDX4, IgG2a Kappa (50 ug) *Reagents are sufficient for at least 3-5 x 96 well plates using recommended protocols.
Storage Instruction	Store reagents of the antibody pair set at -20°C or lower. Please aliquot to avoid repeated freeze thaw cycle. Reagents should be returned to -20°C storage immediately after use.

Applications

- ELISA Pair (Recombinant protein)

[Protocol Download](#)

Gene Info — CDX4

Entrez GeneID	1046
Gene Name	CDX4
Gene Alias	-
Gene Description	caudal type homeobox 4
Omim ID	300025
Gene Ontology	Hyperlink
Other Designations	OTTHUMP00000023566 caudal type homeo box transcription factor 4 caudal type homeobox transcription factor 4