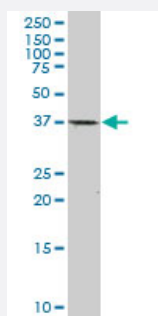


CDX2 monoclonal antibody (M01), clone 1C7

Catalog # H00001045-M01

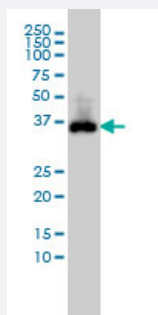
Size 100 ug

Applications



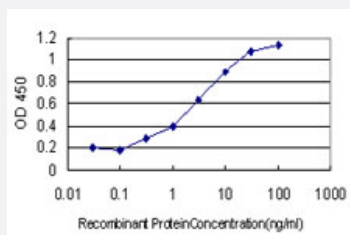
Western Blot (Tissue lysate)

CDX2 monoclonal antibody (M01), clone 1C7. Western Blot analysis of CDX2 expression in human parotid gland.



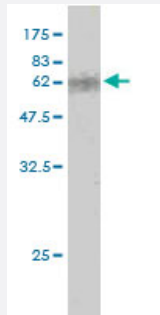
Western Blot (Cell lysate)

CDX2 monoclonal antibody (M01), clone 1C7 Western Blot analysis of CDX2 expression in COLO 320 HSR (Cat # L020V1).



Sandwich ELISA (Recombinant protein)

Detection limit for recombinant GST tagged CDX2 is approximately 0.03ng/ml as a capture antibody.



Western Blot detection against Immunogen (60.17 KDa) .

Specification

Product Description	Mouse monoclonal antibody raised against a full length recombinant CDX2.
Immunogen	CDX2 (AAH14461.1, 1 a.a. ~ 313 a.a) full-length recombinant protein with GST tag. MW of the GST tag alone is 26 KDa.
Sequence	MYVSYLLDKDVSMYPSSVRHSGGLNLAPQNFVSPQYPDYGGYHVAANLDSAQSPGP SWPAAYGAPLREDWNGYAPGGAAAAANAVAHGPNGGSPAAAMGYSSPADYHPHHHPHHHPHH PAAAPSCASGLLQTLNPGPPGPAATAAAEQLSPGGQRRNLCEWMRKAQQSLGSQVKTRTKD KYRVVYTDHQRLELEKEFHYSRYTIRKAEALATLGLSERQVKMWFQNRRAKERKINKKKLQQQQQ QQPPQPPPPPPQPPQPPGPLRSVPEPLSPVSSLQASVSGSVPGVLGPTGGVLNPTVTQ
Host	Mouse
Reactivity	Human
Interspecies Antigen Sequence	Mouse (91); Rat (93)
Isotype	IgG
Quality Control Testing	Antibody Reactive Against Recombinant Protein. Western Blot detection against Immunogen (60.17 KDa) .
Storage Buffer	In 1x PBS, pH 7.4
Storage Instruction	Store at -20°C or lower. Aliquot to avoid repeated freezing and thawing.

Applications

- Western Blot (Tissue lysate)

CDX2 monoclonal antibody (M01), clone 1C7. Western Blot analysis of CDX2 expression in human parotid gland.

[Protocol Download](#)

- Western Blot (Cell lysate)

CDX2 monoclonal antibody (M01), clone 1C7 Western Blot analysis of CDX2 expression in COLO 320 HSR (Cat # L020V1).

[Protocol Download](#)

- Western Blot (Recombinant protein)

[Protocol Download](#)

- Sandwich ELISA (Recombinant protein)

Detection limit for recombinant GST tagged CDX2 is approximately 0.03ng/ml as a capture antibody.

[Protocol Download](#)

- ELISA

Gene Info — CDX2

Entrez GeneID [1045](#)

GeneBank Accession# [BC014461](#)

Protein Accession# [AAH14461.1](#)

Gene Name CDX2

Gene Alias CDX-3, CDX3

Gene Description caudal type homeobox 2

Omim ID [600297](#)

Gene Ontology [Hyperlink](#)

Gene Summary The level and beta-cell specificity of insulin gene expression are regulated by a set of nuclear proteins that bind to specific sequences within the promoter of the insulin gene (INS; MIM 176730) and interact with RNA polymerase to activate or repress transcription. The proteins LMX1 (MIM 600298) and CDX3 are homeodomain proteins that bind an A/T-rich sequence in the insulin promoter and stimulate its transcription (German et al., 1994 [PubMed 7698771]).[supplied by OMIM]

Other Designations OTTHUMP00000018176|caudal type homeo box transcription factor 2|caudal type homeobox transcription factor 2

Publication Reference

- [Transcriptional control of the B3GALT5 gene by a retroviral promoter and methylation of distant regulatory elements.](#)

Zulueta A, Caretti A, Signorelli P.

FASEB Journal 2014 Feb; 28(2):946.

Application: WB-Ce, Human, MCF-7, MDA-MB-231, MKN-45, KATOIII, HuCC-T1, HT-29, HCT-15, COLO-205, SW-116, HEK-293T/17, Huh7, Hep-3B cells

Disease

- [Colorectal Neoplasms](#)
- [Genetic Predisposition to Disease](#)